



This feature will challenge your diagnostic acumen with a glimpse of x-rays, electrocardiograms, and photographs of conditions that real urgent care patients have presented with.

If you would like to submit a case for consideration, please e-mail the relevant materials and presenting information to editor@jucm.com.

Figure 1.



The patient presented with painless hard masses on one lower leg.

View the image taken (**Figure 1**) and consider what your diagnosis would be.

Resolution of the case is described on the next page.

THE RESOLUTION

Figure 2.



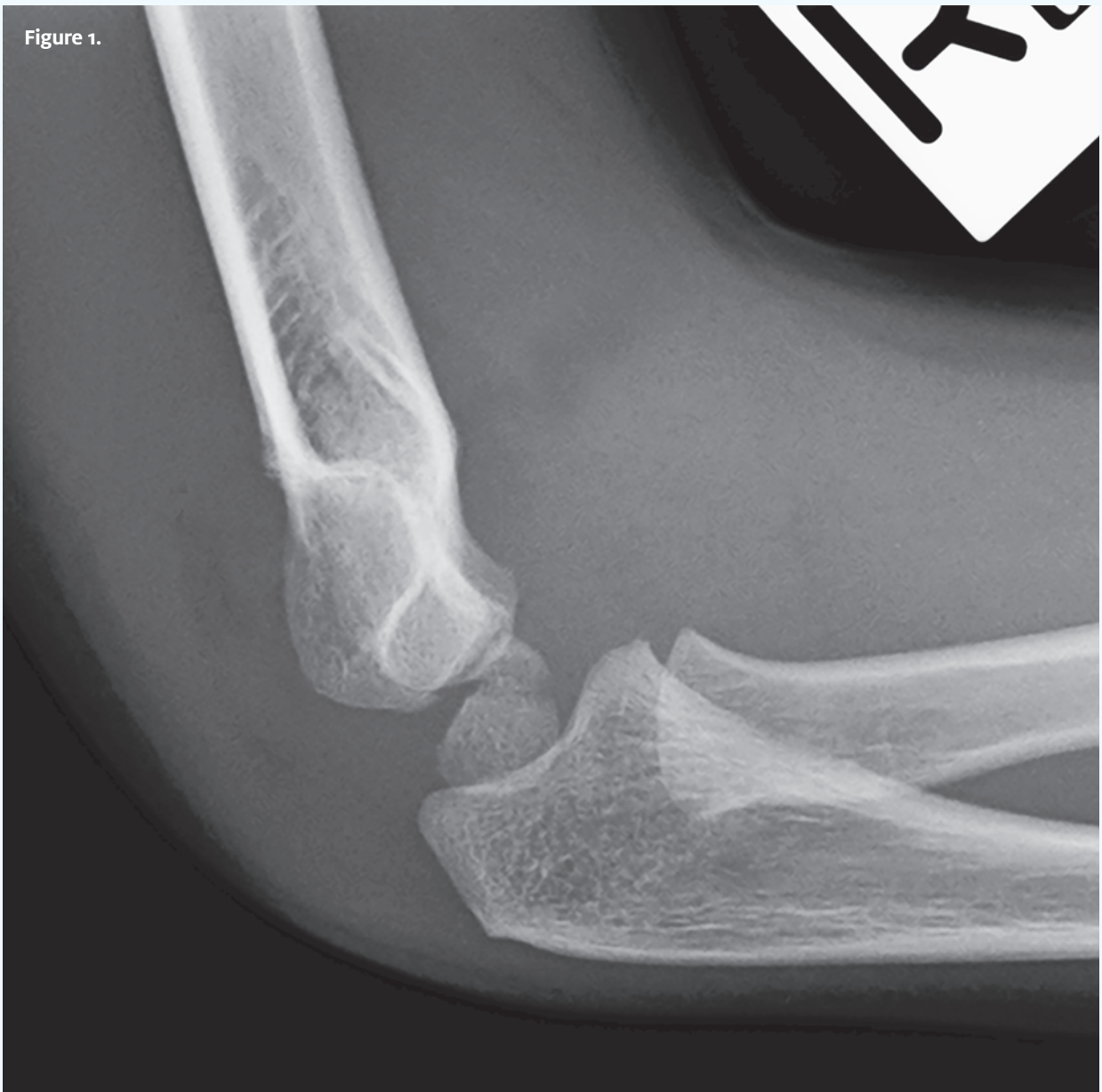
Diagnosis: Osteochondromatosis. Osteochondromatosis is an inherited disorder in which multiple osteochondromas (black arrows in **Figure 2**) are seen throughout the skeleton.

Patients may have anywhere from 2 osteochondromas to hundreds of them. Most are incidentally found on x-rays in adolescents. If osteochondromas are not discovered incidentally, patients present in the first or second decade of life with palpable bony masses and limb shortening.

Complications of osteochondromas include fractures, bony deformities, neurologic and vascular injuries, bursa formation, and malignant transformation.



Figure 1.



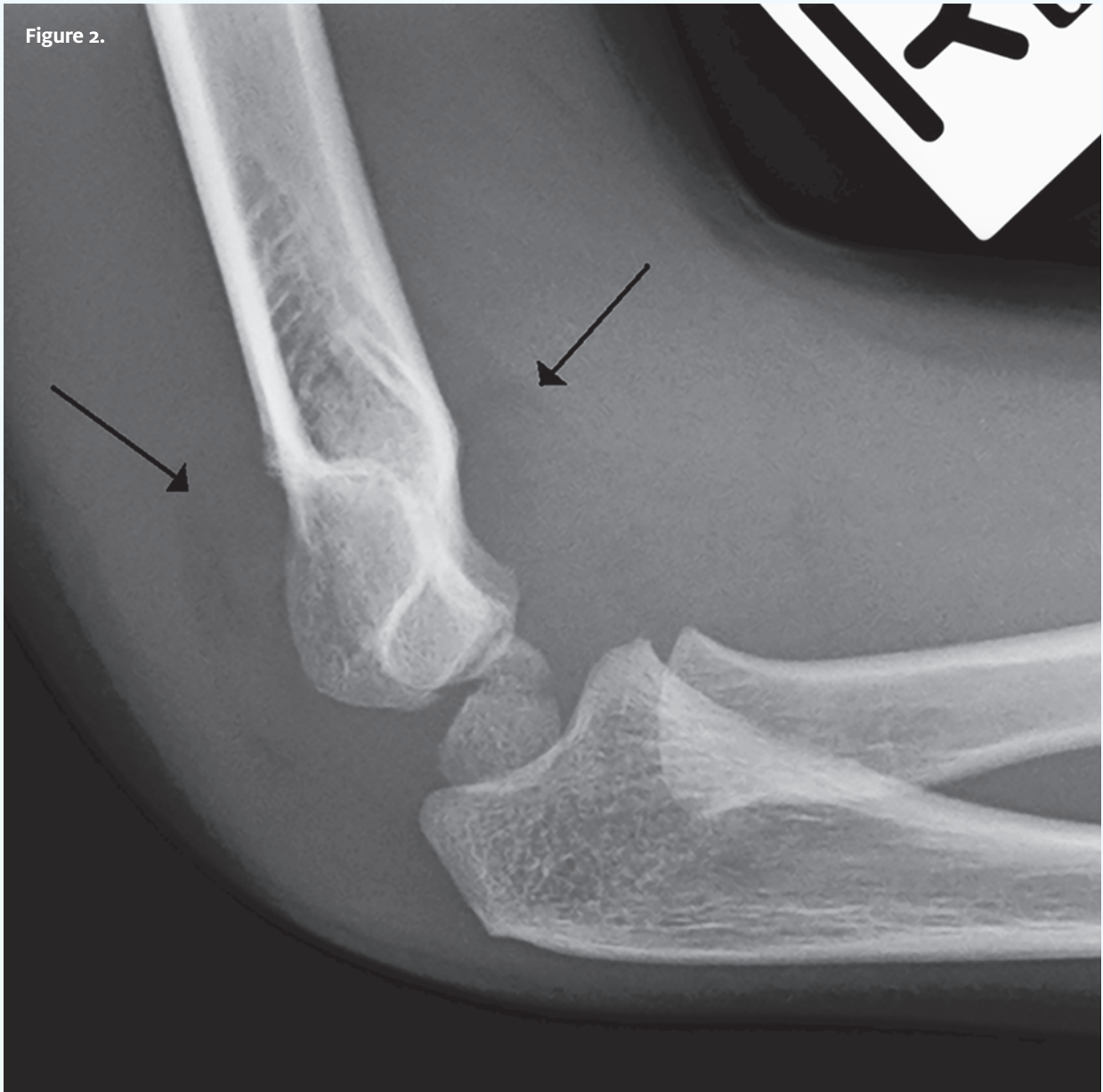
A child presents after a fall on an outstretched arm from monkey bars. Pain and voluntary guarding of the elbow are noted.

View the image taken (**Figure 1**) and consider what your diagnosis would be.

Resolution of the case is described on the next page.

THE RESOLUTION

Figure 2.



Diagnosis: Occult elbow fracture.

Note the posterior fat pad that is evident on this lateral view (**Figure 2**). Posterior fat pads are never normal and usually represent an occult elbow fracture when no other radiographic findings are seen. Note the sail sign (arrows), which identifies the anterior fat pad. This may be normal when present without other radiographic abnormalities. (**Figure 1** modified with permission and **Figure 2** used unmodified with permission under a Creative Commons BY 3.0 U.S. license from James Heilman, MD. Fat pad sign. In: *Wikipedia*. http://en.wikipedia.org/wiki/Fat_pad_sign. Original figure available from <http://commons.m.wikipedia.org/wiki/File:Sailsign.PNG>.)