

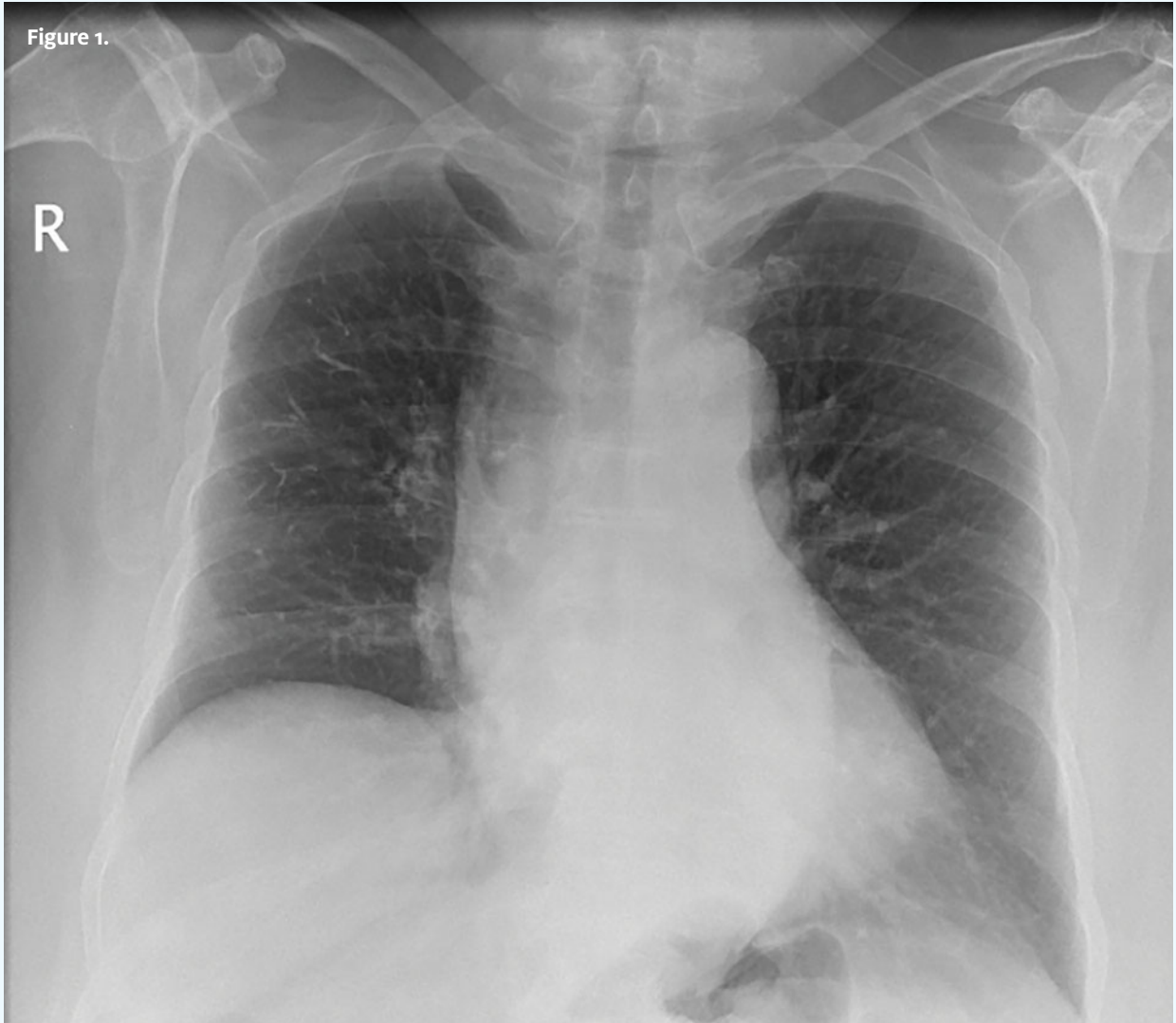


INSIGHTS IN IMAGES  
CLINICAL CHALLENGE

This feature will challenge your diagnostic acumen with a glimpse of x-rays, electrocardiograms, and photographs of conditions that real urgent care patients have presented with.

If you would like to submit a case for consideration, please e-mail the relevant materials and presenting information to [editor@jucm.com](mailto:editor@jucm.com).

Figure 1.



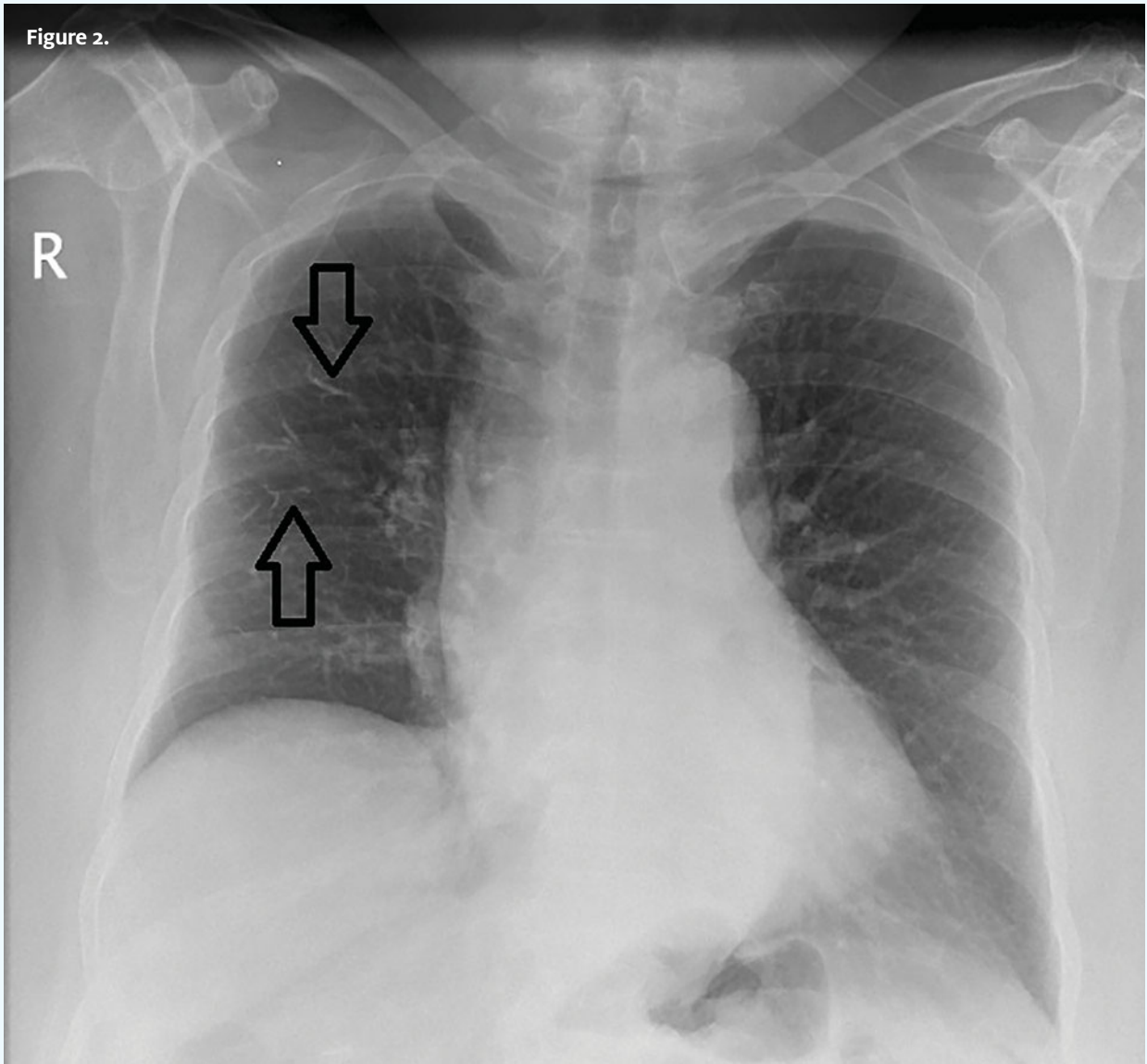
The patient presented with an upper respiratory infection after vertebroplasty. A chest x-ray was ordered to rule out pneumonia.

View the image taken (**Figure 1**) and consider what your diagnosis would be.

Resolution of the case is described on the next page.

## THE RESOLUTION

Figure 2.



Diagnosis: Cement embolus. Note several thin linear densities in the right mid-lung (arrows in **Figure 2**). These represent vertebroplasty cement particles that have embolized into distal pulmonary artery branches. Patients are usually asymptomatic and treatment is supportive, though sometimes anticoagulation or embolectomy may be required. Most cases resolve within 1 year. A computed tomography scan of the chest should be done to rule out cardiac complications, including perforation.