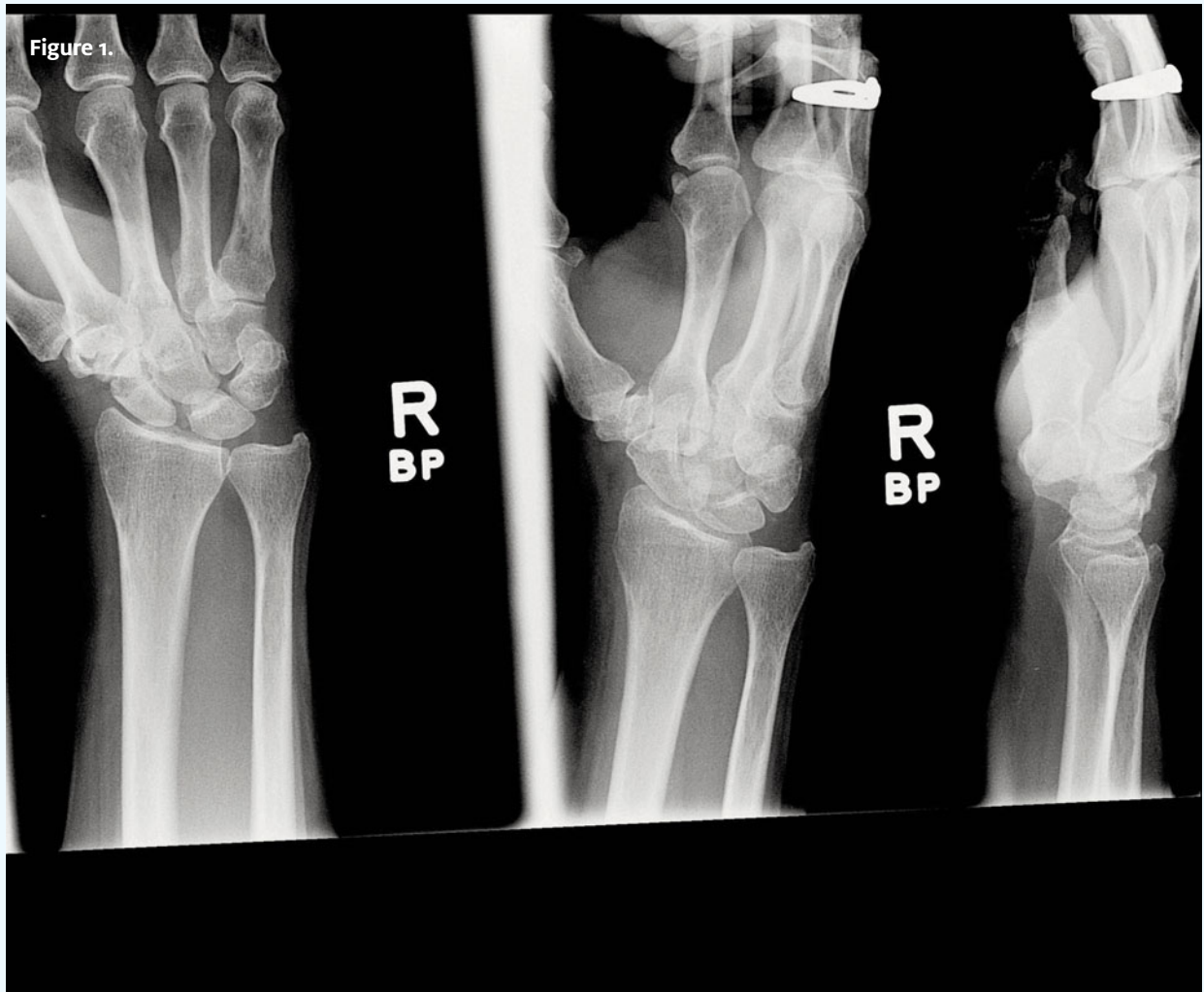




INSIGHTS IN IMAGES  
CLINICAL CHALLENGE

This feature will challenge your diagnostic acumen with a glimpse of x-rays, electrocardiograms, and photographs of conditions that real urgent care patients have presented with.

If you would like to submit a case for consideration, please e-mail the relevant materials and presenting information to [editor@jucm.com](mailto:editor@jucm.com).

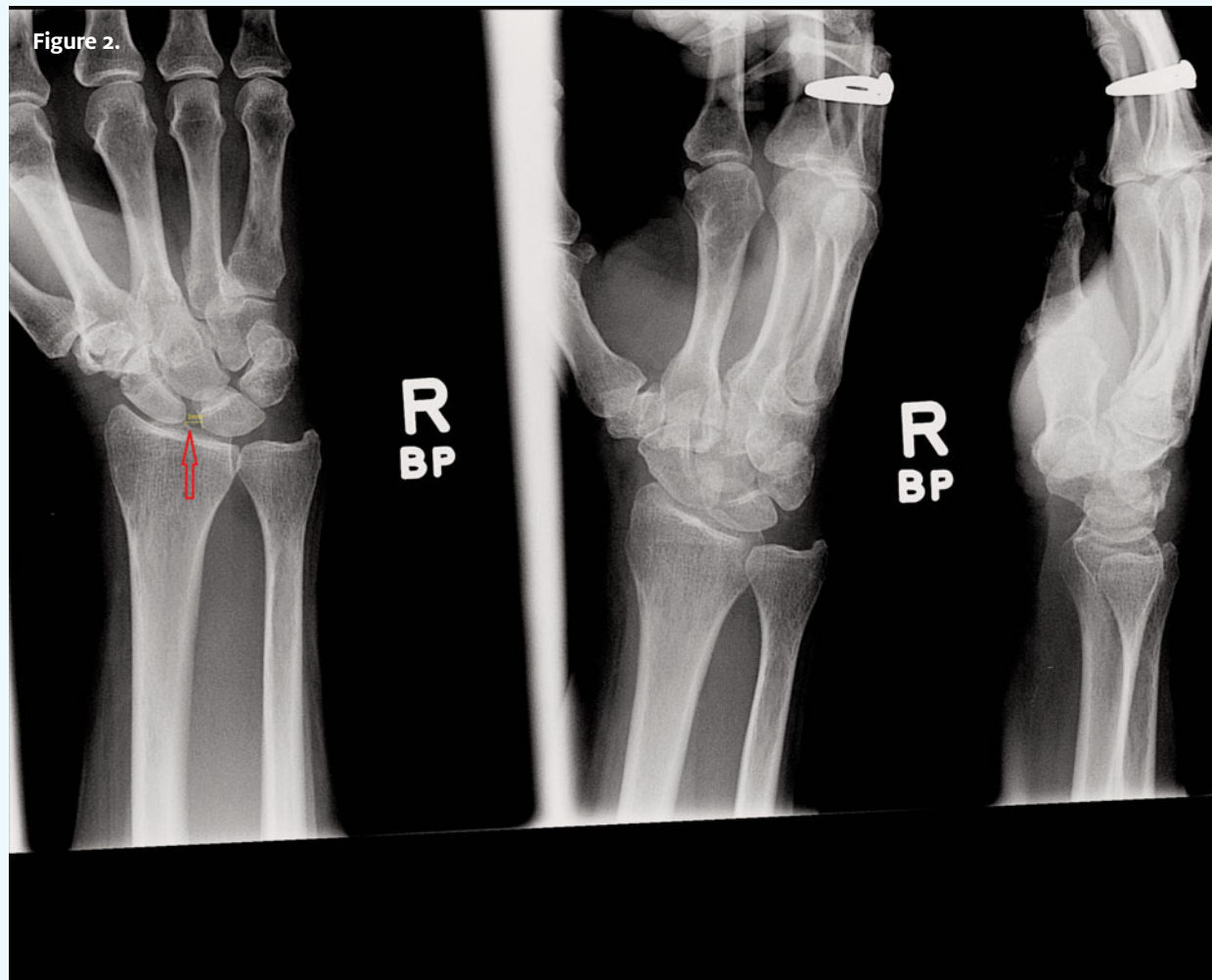


The patient presented with wrist pain after a fall on an outstretched hand (FOOSH).

View the image taken (**Figure 1**) and consider what your diagnosis would be.

Resolution of the case is described on the next page.

## THE RESOLUTION



Diagnosis: Scapholunate dissociation. This is a significant ligamentous wrist injury. Findings on x-ray can be subtle but are important to identify. There is disruption of the scapholunate ligament with resultant instability.

Anteroposterior radiographs may demonstrate a widened scapholunate space ( $>3$  mm), known as the Leon Spinks sign (a gap-tooth appearance; *red arrow* in **Figure 2**). This is best seen in clenched-fist views and posteroanterior views with the wrist in ulnar deviation.