

## INSIGHTS IN IMAGES CLINICAL CHALLENGE

In each issue, *JUCM* will challenge your diagnostic acumen with a glimpse of x-rays, electrocardiograms, and photographs of dermatologic conditions that real urgent care patients have presented with.

If you would like to submit a case for consideration, please e-mail the relevant materials and presenting information to [editor@jucm.com](mailto:editor@jucm.com).

FIGURE 1



This patient presented with an ankle injury.

View the image taken (**Figure 1**) and consider what your diagnosis would be.

Resolution of the case is described on the next page.

THE RESOLUTION

FIGURE 2A

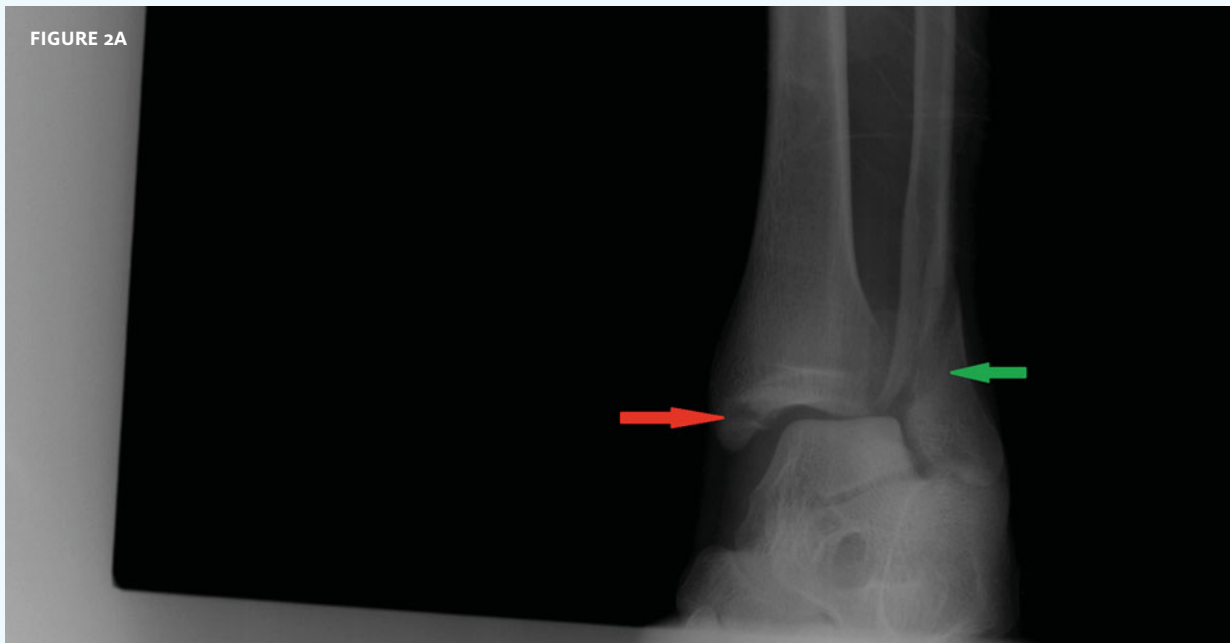


FIGURE 2B



Diagnosis: The x-ray reveals a trimalleolar fracture of the ankle (arrows).

A trimalleolar fracture of the ankle involves the lateral malleolus (green arrow), medial malleolus (red arrow) and the distal posterior aspect of the tibia (black arrow). Ligament damage and dislocation are common. This is an unstable fracture and requires emergent orthopaedic consultation and adequate immobilization and analgesia in the urgent care center.

Acknowledgement: Case presented by Teleradiology Specialists (<http://www.teleradiologyspecialists.com>)