

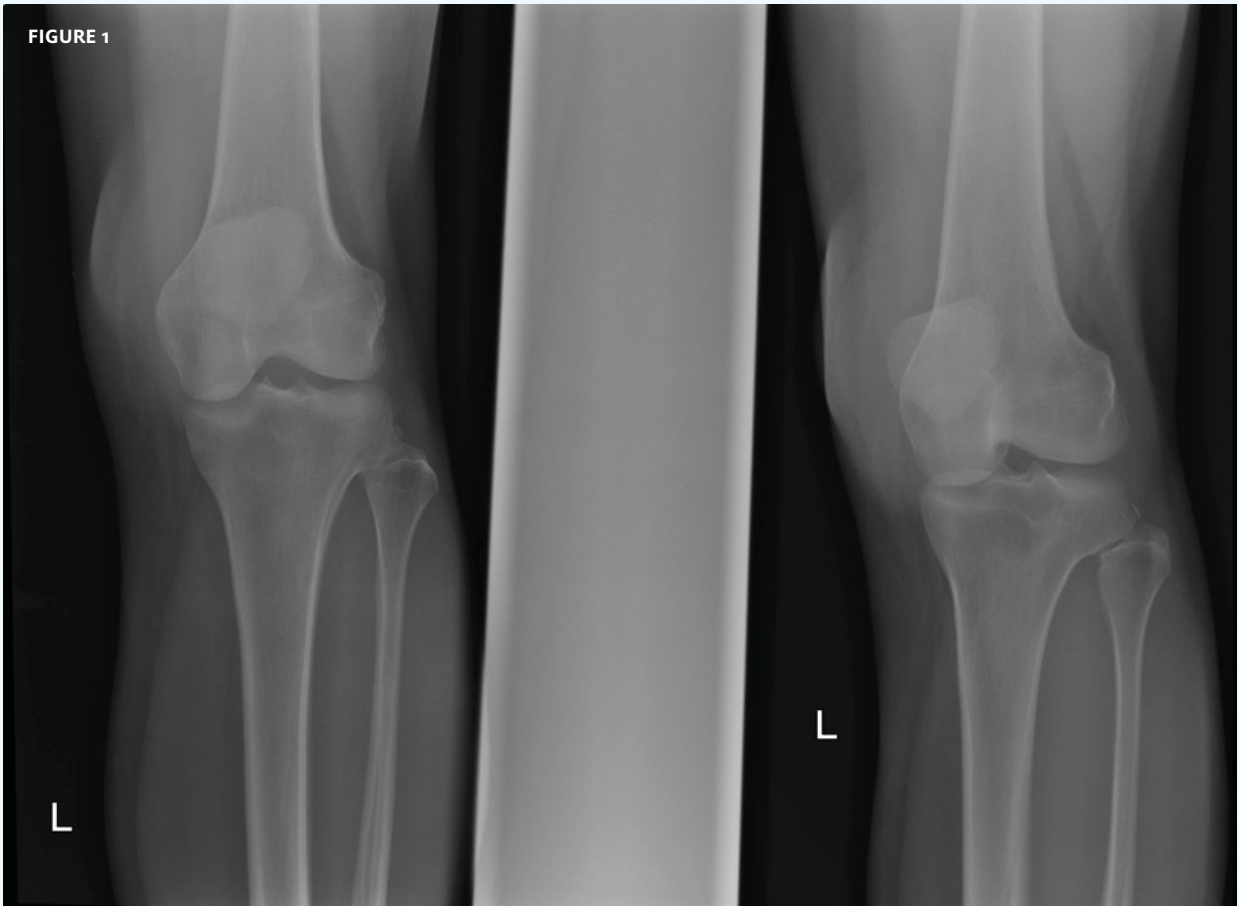


INSIGHTS IN IMAGES
CLINICAL CHALLENGE

In each issue, *JUCM* will challenge your diagnostic acumen with a glimpse of x-rays, electrocardiograms, and photographs of dermatologic conditions that real urgent care patients have presented with.

If you would like to submit a case for consideration, please e-mail the relevant materials and presenting information to editor@jucm.com.

FIGURE 1

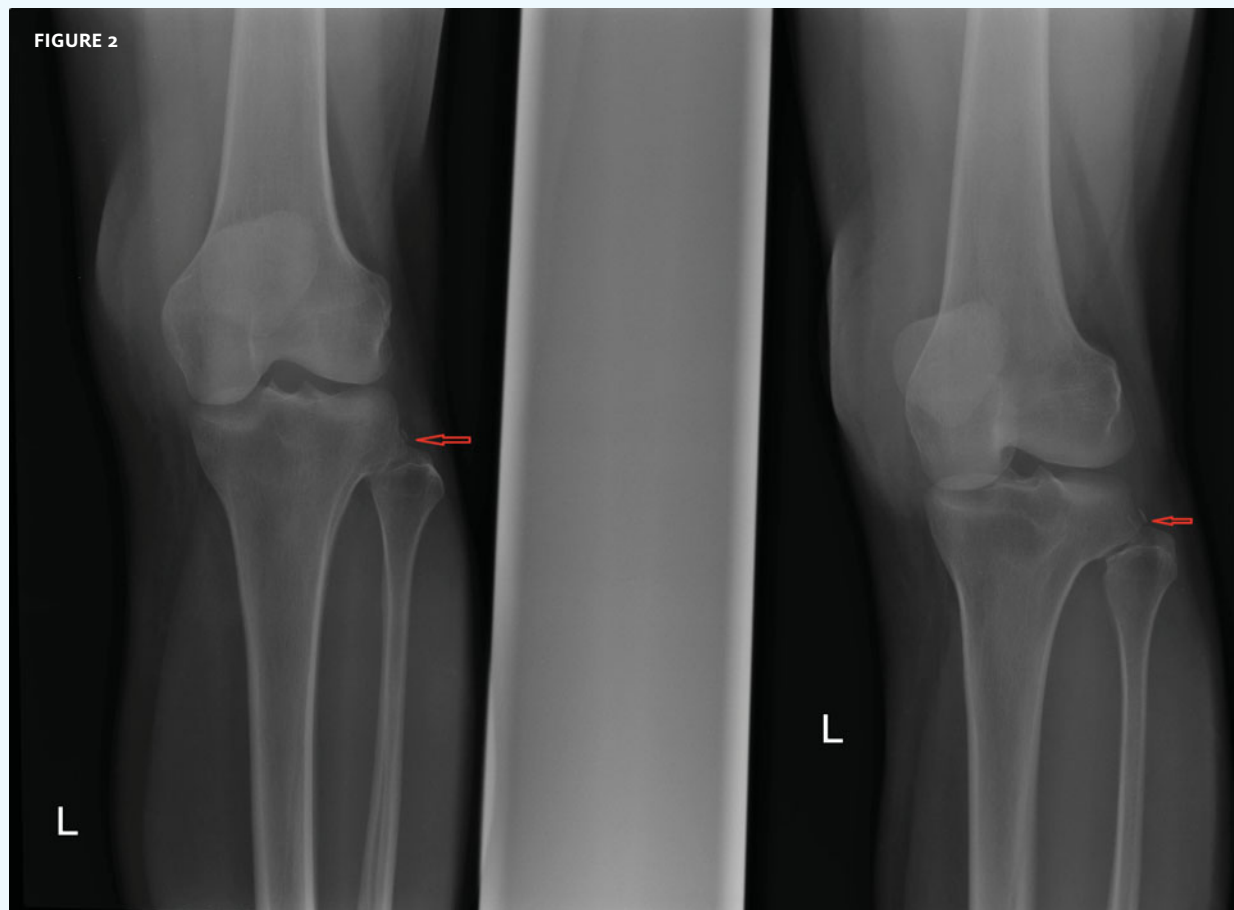


This patient presented with a sprained knee.

View the image taken (**Figure 1**) and consider what your diagnosis would be.

Resolution of the case is described on the next page.

THE RESOLUTION



Diagnosis: The x-ray reveals a Segond fracture.

A Segond fracture is an avulsion fracture of the lateral tibial condyle of the knee, just distal to the articular surface with the femur (red arrows). This fracture is associated with ligamentous and meniscal injury. Orthopedic referral is indicated.

Acknowledgement: Case presented by Teleradiology Specialists (<http://www.teleradiologyspecialists.com>)