

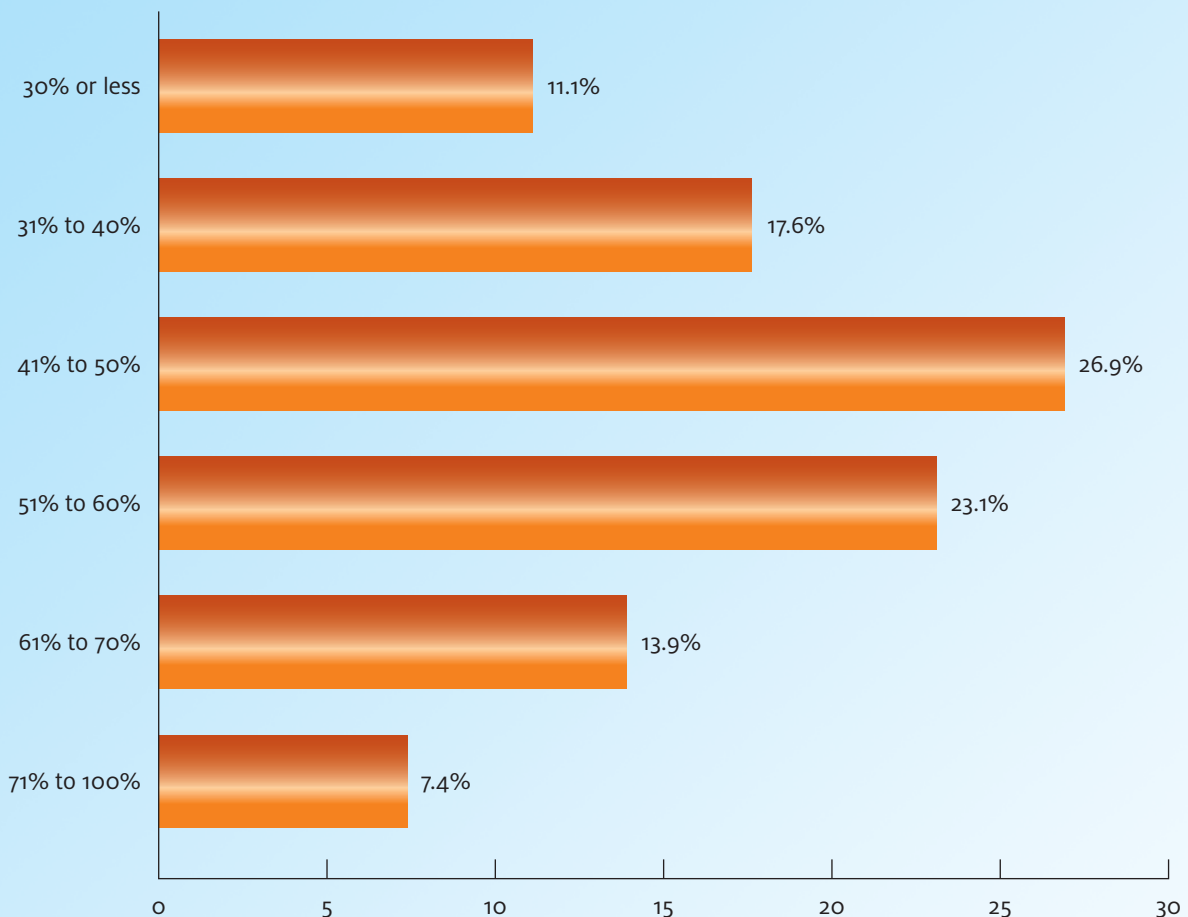


## DEVELOPING DATA

These data from the 2012 Urgent Care Industry Benchmarking Study are based on a sample of 1,732 urgent care centers; 95.2% of the respondents were UCAOA members. Among other criteria, the study was limited to centers that have a licensed provider onsite at all times; have two or more exam rooms; typically are open 7 days/week, 4 hours/day, at least 3,000 hours/year; and treat patients of all ages (unless specifically a pediatric urgent care).

*In this issue:* What Percentage of expenses are spent on salaries?

### PERCENTAGE OF EXPENSE: SALARIES



The annual Average Total Expenses among responding centers open for at least 12 months at the time of their response were \$2,294,689 (n=75).

*Acknowledgement: The 2012 Urgent Care Industry Benchmarking Study was funded by the Urgent Care Association of America and administered by Anderson, Niebuhr and Associates, Inc. The full report can be purchased at [www.ucaoa.org/benchmarking](http://www.ucaoa.org/benchmarking).*