



INSIGHTS IN IMAGES

CLINICAL CHALLENGE

In each issue, *JUCM* will challenge your diagnostic acumen with a glimpse of x-rays, electrocardiograms, and photographs of dermatologic conditions that real urgent care patients have presented with.

If you would like to submit a case for consideration, please email the relevant materials and presenting information to editor@jucm.com.

FIGURE 1



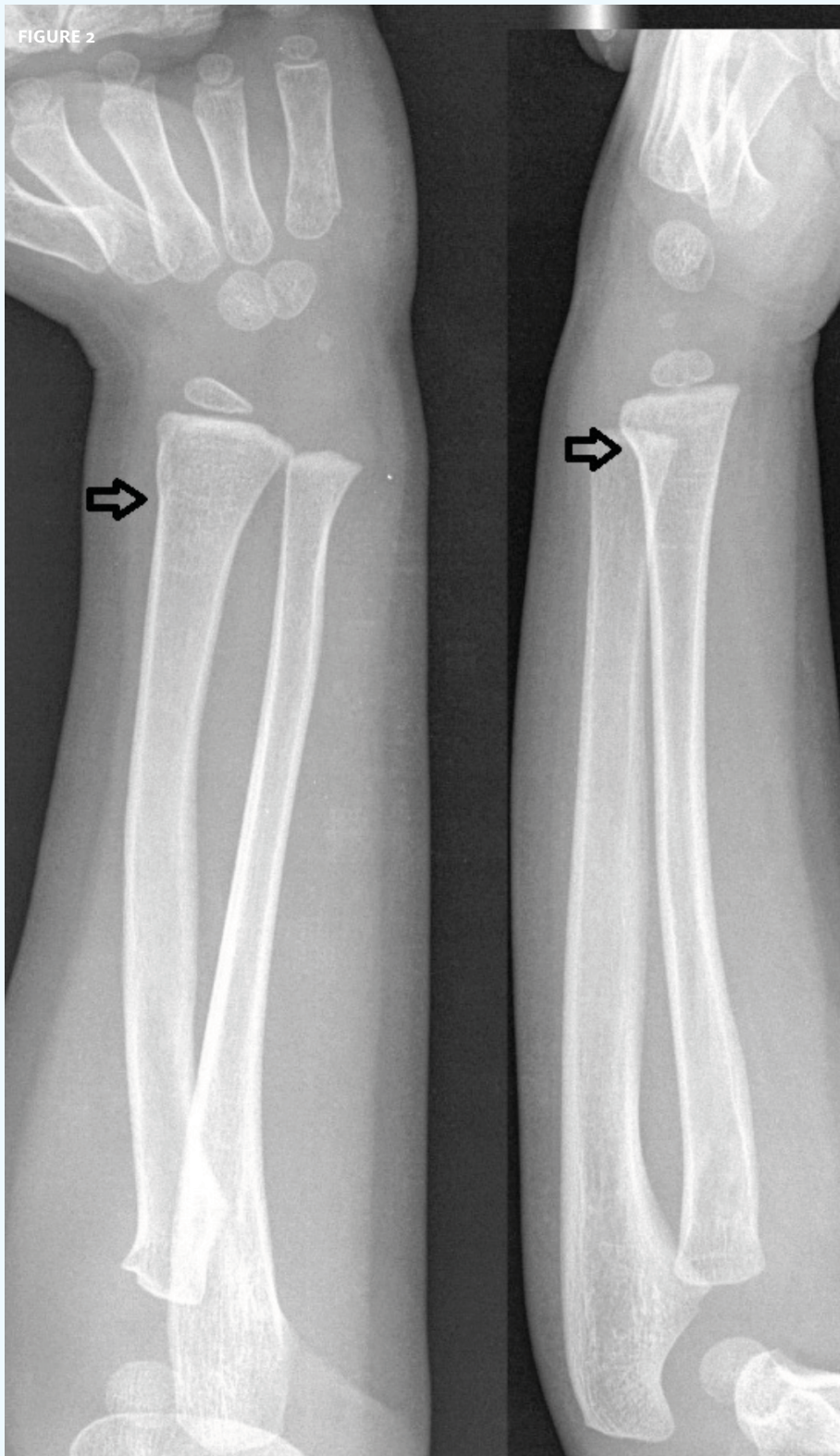
The patient, a 3-year-old male, suffered a blow to his left wrist.

View the image taken (**Figure 1**) and consider what your diagnosis would be.

Resolution of the case is described on the next page.

THE RESOLUTION

FIGURE 2



Diagnosis: The x-ray reveals a Greenstick/Torus fracture of the distal radius. A cast splint and follow up with an orthopedist are appropriate for this patient.

*Acknowledgement:
Case presented by
Nahum Kovalski, BSc,
MDCM, Terem Emergency
Medical Centers, Jerusalem,
Israel.*