



In each issue, *JUCM* will challenge your diagnostic acumen with a glimpse of x-rays, electrocardiograms, and photographs of dermatologic conditions that real urgent care patients have presented with.

If you would like to submit a case for consideration, please email the relevant materials and presenting information to [editor@jucm.com](mailto:editor@jucm.com).

FIGURE 1



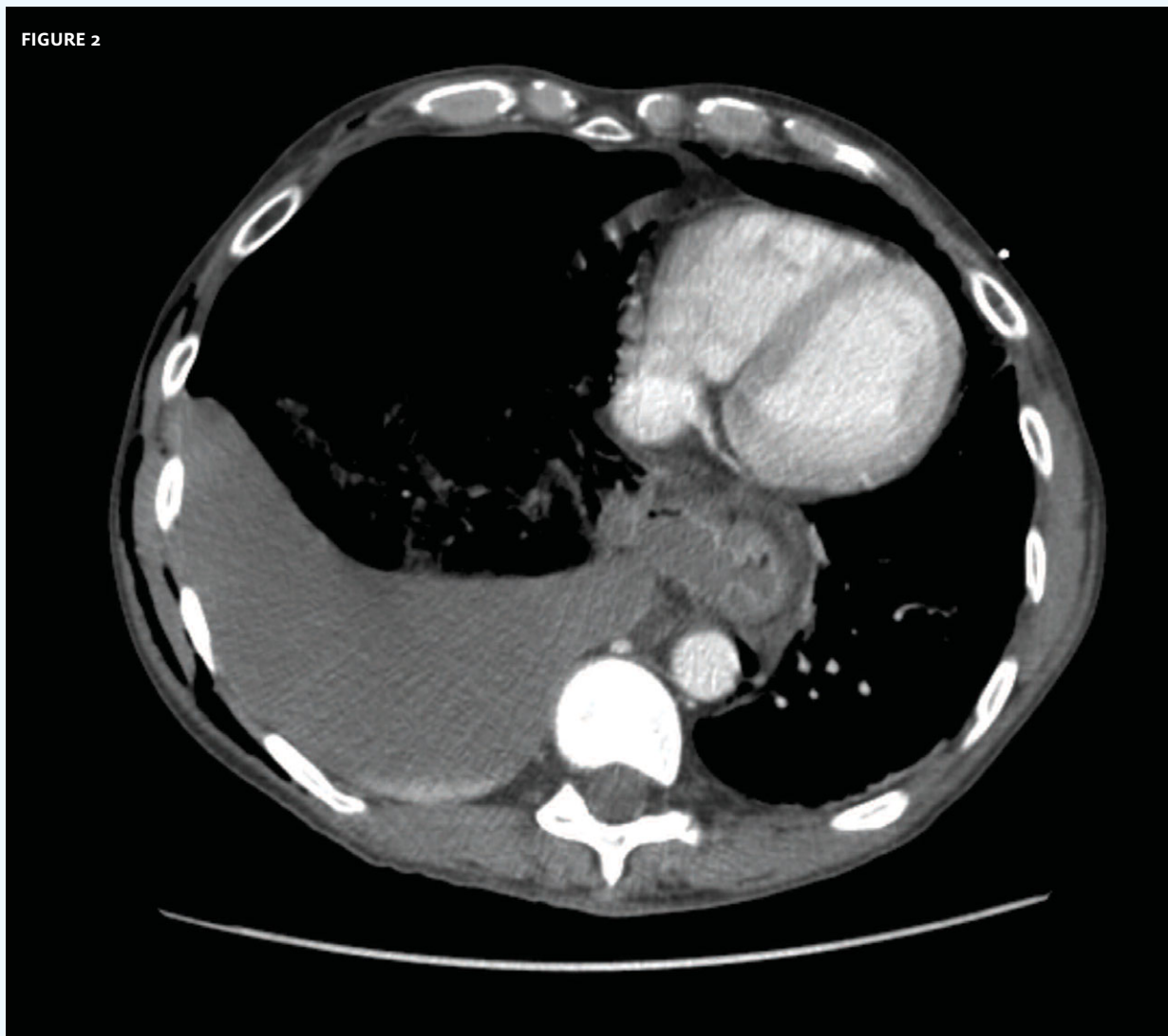
The patient, a 45-year-old man, presented with vomiting and chest pain.

View the image taken (**Figure 1**) and consider what your diagnosis would be.

Resolution of the case is described on the next page.

THE RESOLUTION

FIGURE 2



Diagnosis: Tension pneumothorax.

A follow-up contrast-enhanced computed tomography scan (**Figure 2**) revealed a ruptured esophagus (Boerhaave's Syndrome).

*Acknowledgement: Case presented by Sian C. Hughes, MBBCh, and Elmari Janssen, MB ChB. Dr. Hughes is a Trust Grade Doctor in Intensive Care Medicine, Department of Critical Care Medicine and Anaesthesia, Cheltenham District General Hospital, Cheltenham, England and Dr. Janssen is a Staff Grade Physician in Emergency Medicine at the University Hospital of Wales, Cardiff.*



FIGURE 1



The patient, a 14-year-old male, presented with a limp following trauma to his left leg.

View the image taken (**Figure 1**) and consider what your diagnosis would be.

Resolution of the case is described on the next page.

THE RESOLUTION

FIGURE 2



This x-ray shows a fracture of the distal tibia (arrows). A cast splint and follow-up with an orthopedist are appropriate for this patient.

*Acknowledgement: Case presented by Nahum Kovalski, BSc, MDCM, Terem Emergency Medical Centers, Jerusalem, Israel.*