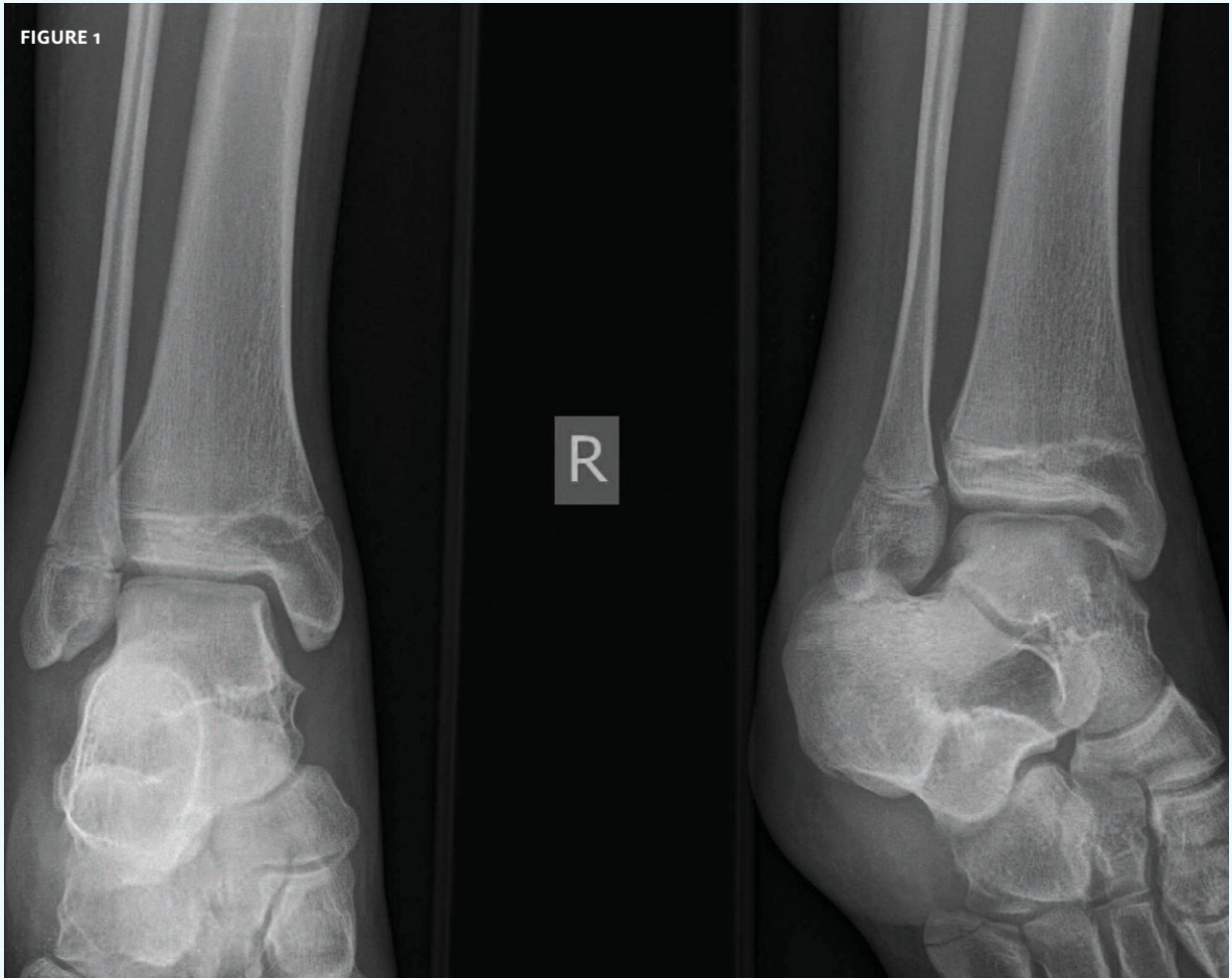




In each issue, *JUCM* will challenge your diagnostic acumen with a glimpse of x-rays, electrocardiograms, and photographs of dermatologic conditions that real urgent care patients have presented with.

If you would like to submit a case for consideration, please email the relevant materials and presenting information to editor@juqm.com.

FIGURE 1

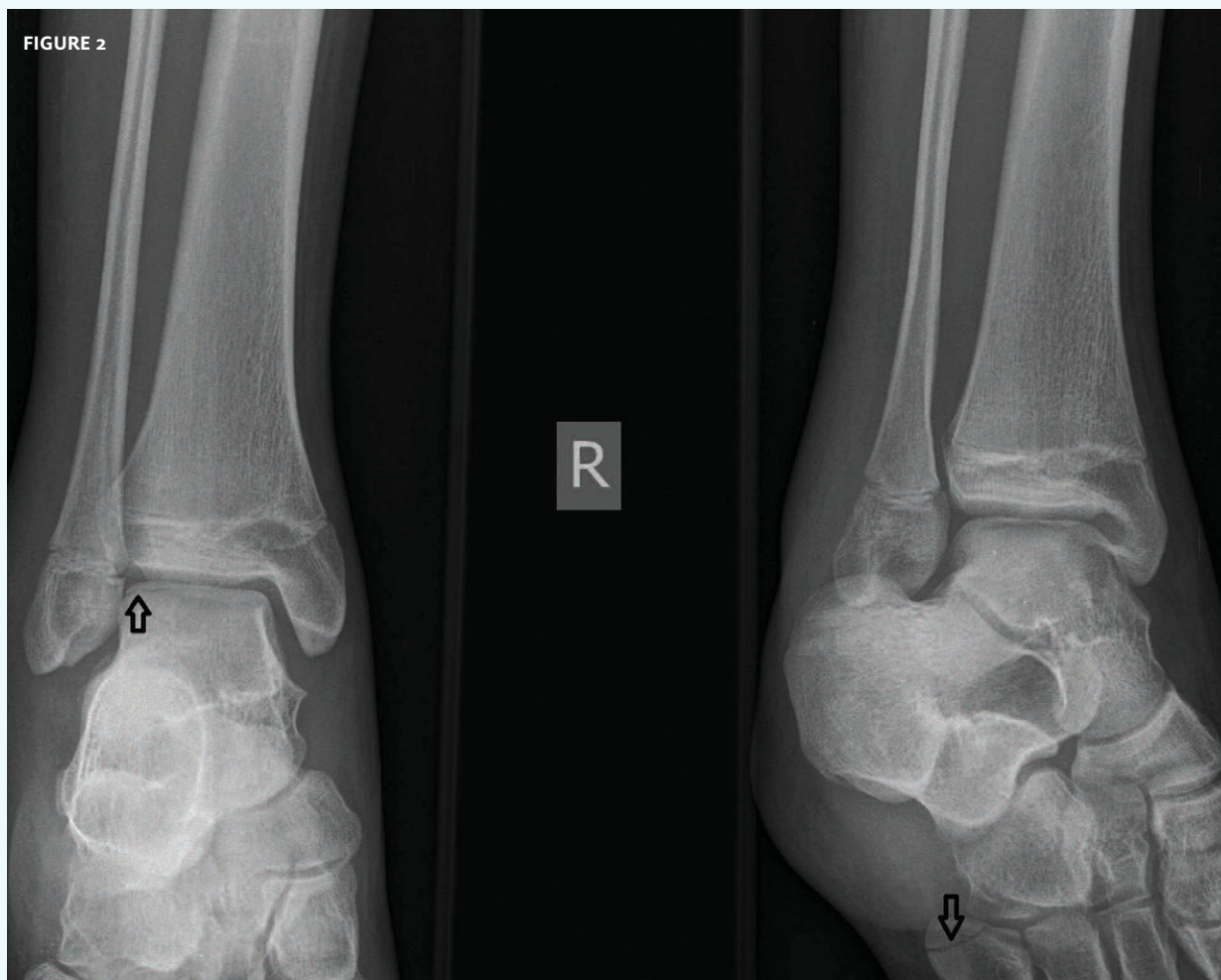


The patient, a 14-year-old male, presented with a twisted ankle and a complaint of difficulty with weight bearing.

View the image taken (**Figure 1**) and consider what your diagnosis would be.

Resolution of the case is described on the next page.

THE RESOLUTION



This x-ray demonstrates fractures of both the talus and the base of the fifth metatarsal (arrows). A cast or bracing with a splint, and follow-up with an orthopedist, is appropriate for this patient.

Acknowledgement: Case presented by Nahum Kovalski, BSc, MDCM, Terem Emergency Medical Centers, Jerusalem, Israel.



FIGURE 1



The patient, a 21-year-old female, presented with trauma to her right wrist.

View the image taken (**Figure 1**) and consider what your diagnosis would be.

Resolution of the case is described on the next page.

THE RESOLUTION

FIGURE 2



The diagnosis is a fracture of the scaphoid (arrows). A spica cast and referral to a hand surgeon for immediate follow-up are indicated for this patient.

Acknowledgement: Case presented by Nahum Kovalski, BSc, MDCM, Terem Emergency Medical Centers, Jerusalem, Israel.