

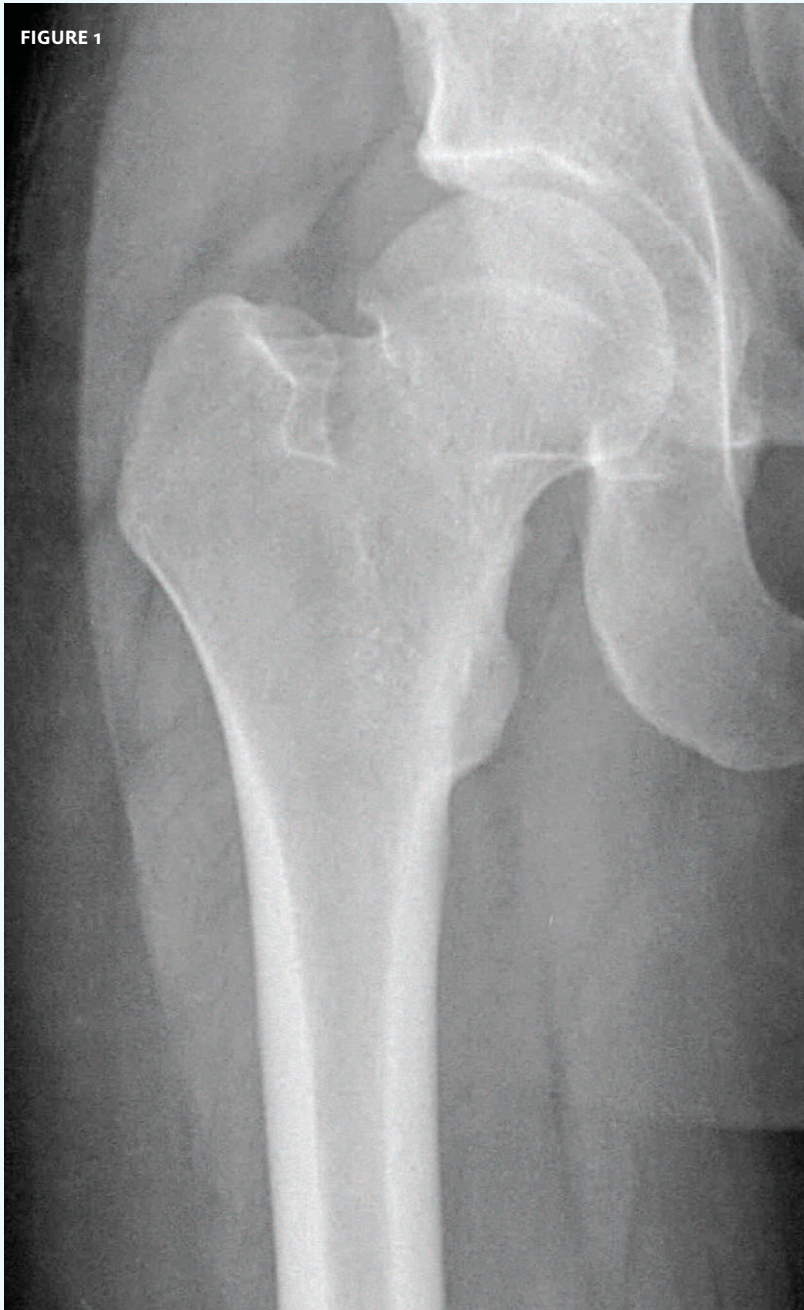


## INSIGHTS IN IMAGE CLINICAL CHALLENGE

In each issue, *JUCM* will challenge your diagnostic acumen with a glimpse of x-rays, electrocardiograms, and photographs of dermatologic conditions that real urgent care patients have presented with.

If you would like to submit a case for consideration, please email the relevant materials and presenting information to [editor@jucm.com](mailto:editor@jucm.com).

FIGURE 1



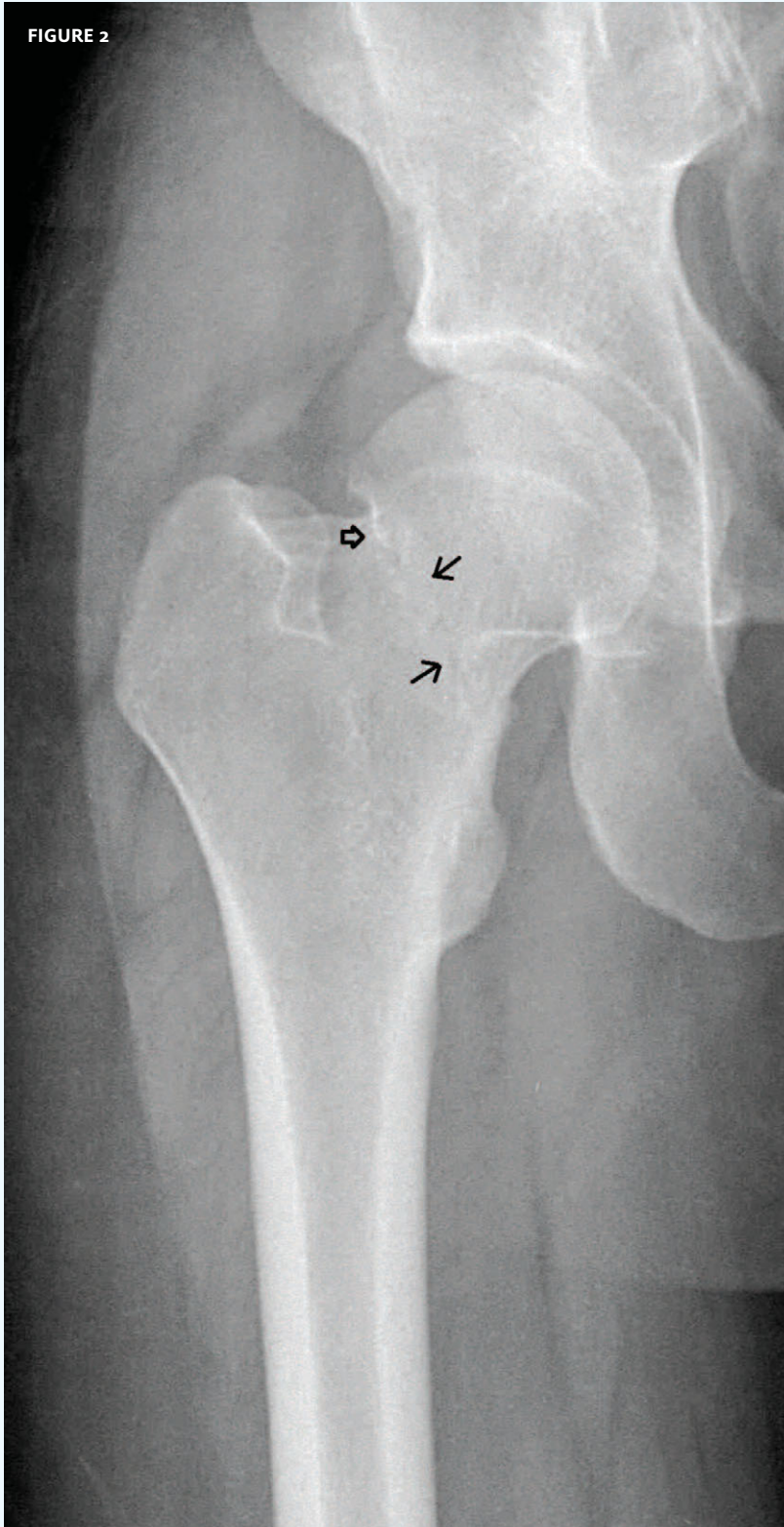
The patient, an otherwise healthy 25-year-old, fell and suffered a blow to the right hip. The injury was not weight-bearing.

View the image taken (**Figure 1**) and consider what your diagnosis would be.

Resolution of the case is described on the next page.

THE RESOLUTION

FIGURE 2



The diagnosis is fracture of the neck of the femur. Femoral neck fractures are frequently missed, and it is not uncommon for patients to be able to weight bear. Occult fractures occur in 2%-9% of cases. If the fracture is not readily apparent on x-ray, MRI is the study of choice. Maintain a high index of suspicion in elderly falls. Refer to hospital for orthopedic evaluation.

*Acknowledgement: Case presented by Nahum Kovalski, BSc, MDCM, Terem Emergency Medical Centers, Jerusalem, Israel.*