



In each issue, *JUCM* will challenge your diagnostic acumen with a glimpse of x-rays, electrocardiograms, and photographs of dermatologic conditions that real urgent care patients have presented with.

If you would like to submit a case for consideration, please email the relevant materials and presenting information to editor@jucm.com.

FIGURE 1



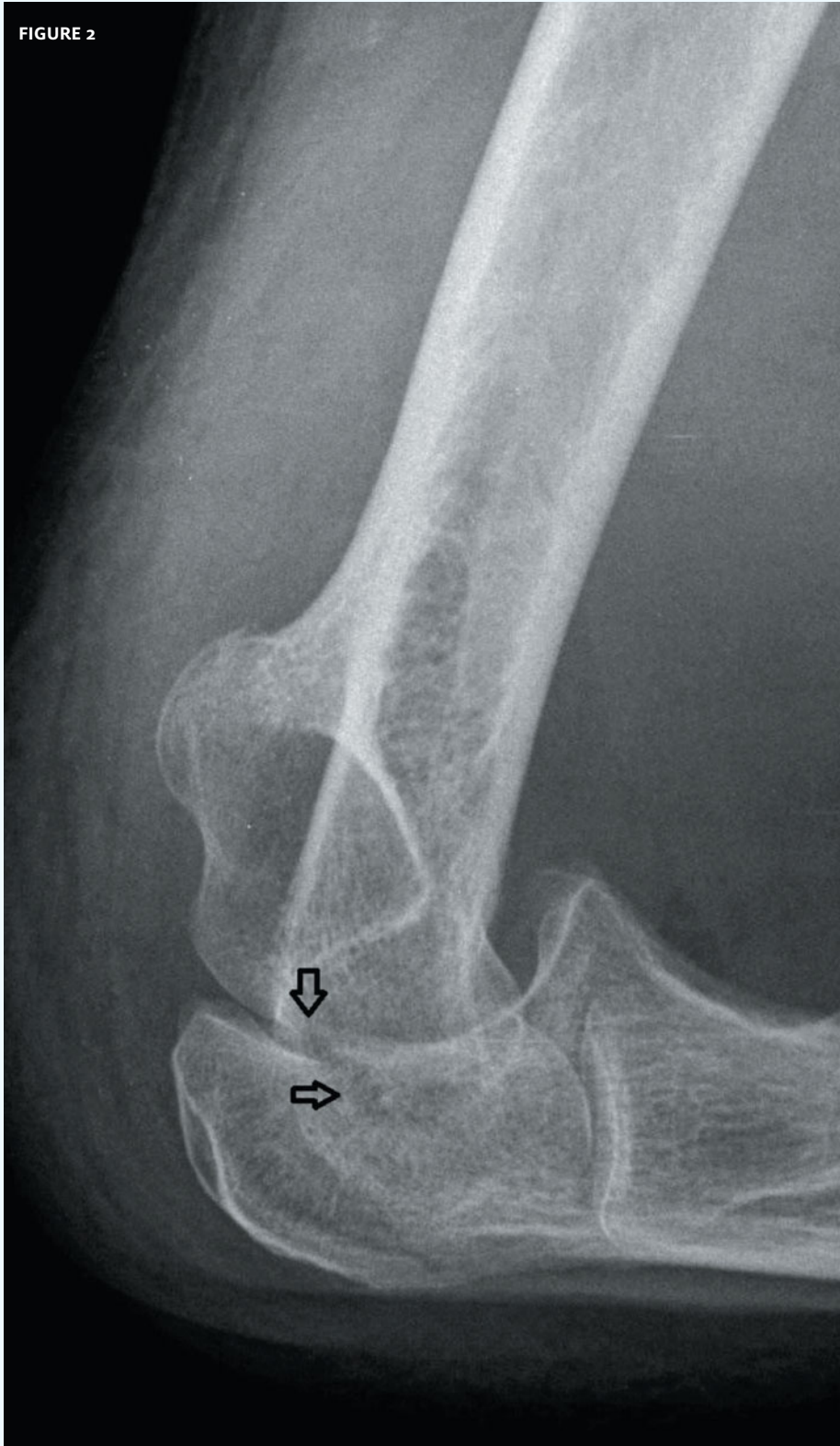
The patient, a 72-year-old male, had local swelling in his right elbow. He had no history of trauma but he did suffer from dementia.

View the image taken (**Figure 1**) and consider what your diagnosis would be.

Resolution of the case is described on the next page.

THE RESOLUTION

FIGURE 2



Diagnosis: The x-ray reveals a fracture of the olecranon. In a patient with dementia and this type of fracture, there may not be a history of a fall or trauma. A cast splint at 90 degrees at the elbow and follow up with an orthopedist are appropriate for this patient.

Acknowledgement: Case presented by Nahum Kovalski, BSc, MDCM, Terem Emergency Medical Centers, Jerusalem, Israel.

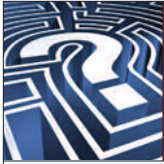


FIGURE 1

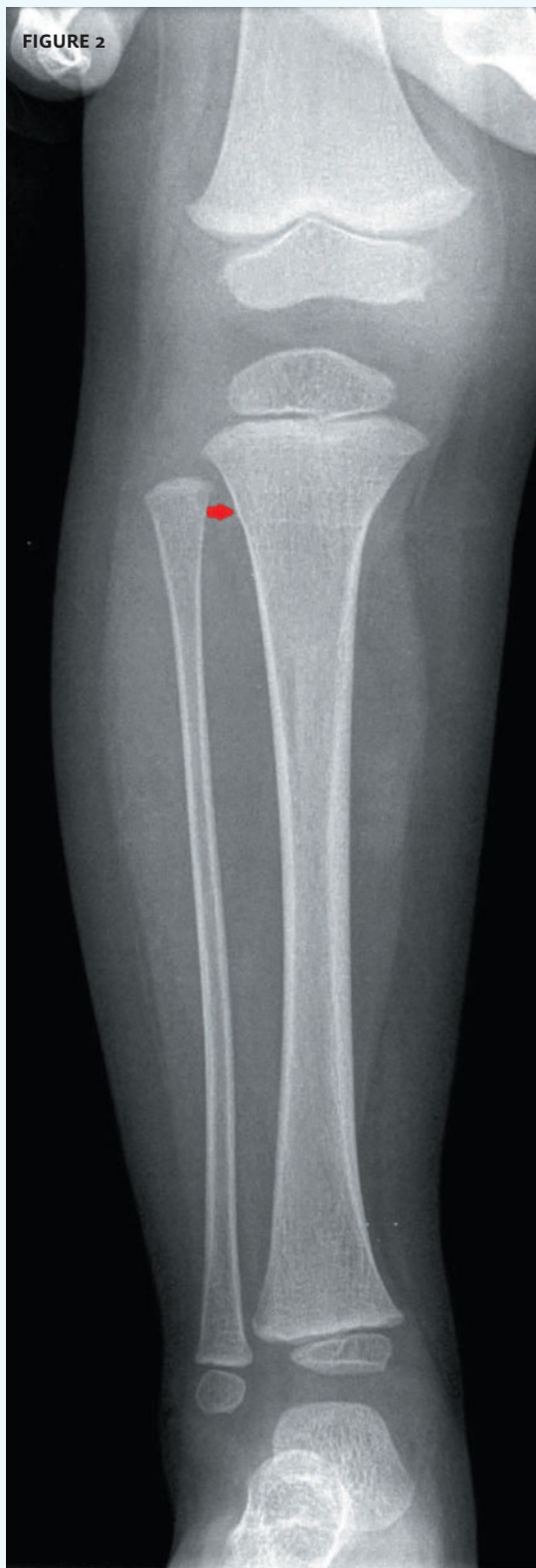


The patient, a 2-year-old girl, suffered a blow to her right knee and could not bear weight on her right leg.

View the image taken (**Figure 1**) and consider what your diagnosis would be.

Resolution of the case is described on the next page.

THE RESOLUTION



Diagnosis: The x-ray reveals a greenstick fracture of the tibia (arrow). A long leg cast splint and follow up with an orthopedist are appropriate for this patient.

Acknowledgement:
Case presented by Nahum Kovalski, BSc, MDCM,
Terem Emergency Medical Centers, Jerusalem, Israel.