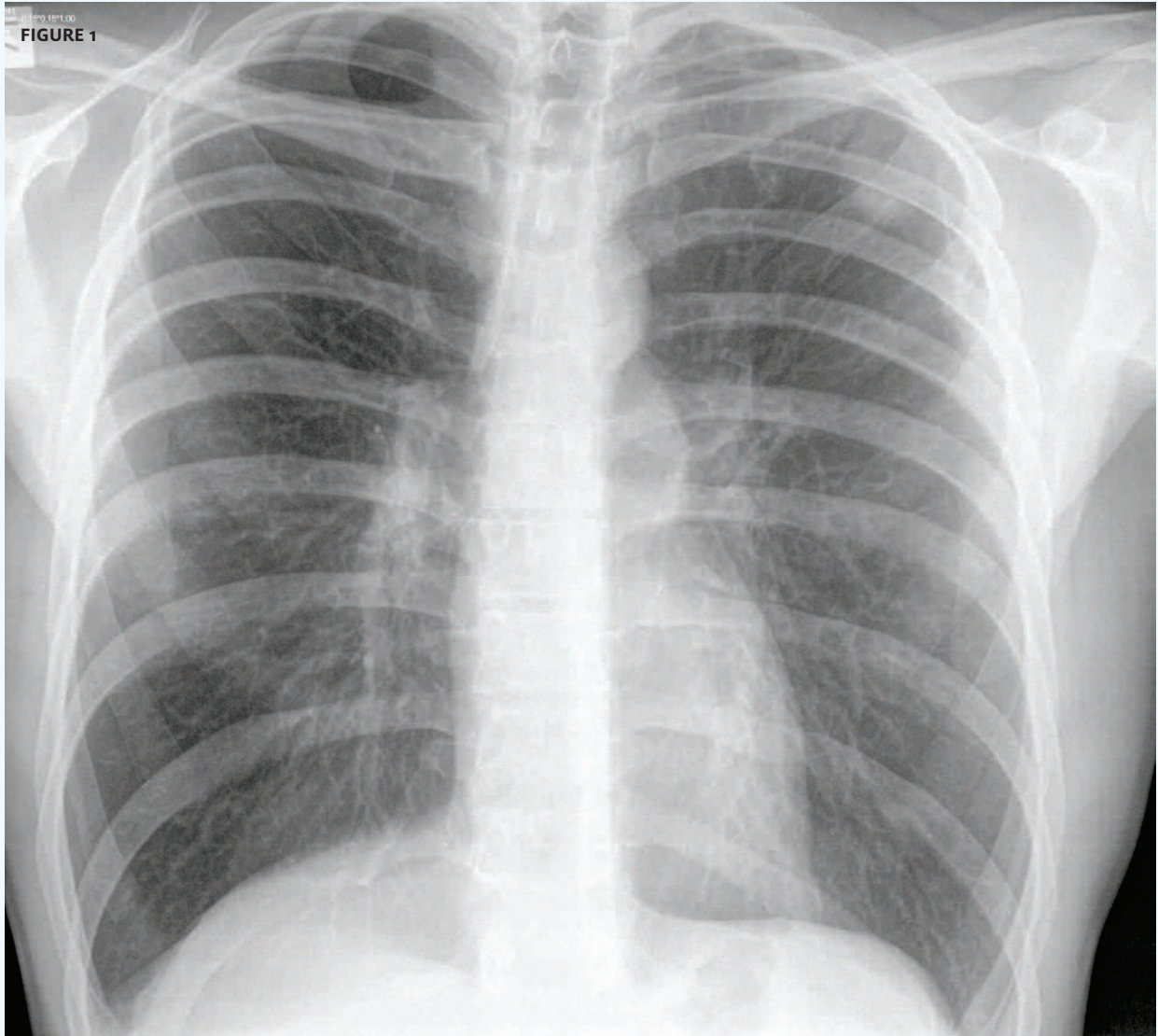




In each issue, *JUCM* will challenge your diagnostic acumen with a glimpse of x-rays, electrocardiograms, and photographs of dermatologic conditions that real urgent care patients have presented with.

If you would like to submit a case for consideration, please email the relevant materials and presenting information to [editor@jucm.com](mailto:editor@jucm.com).

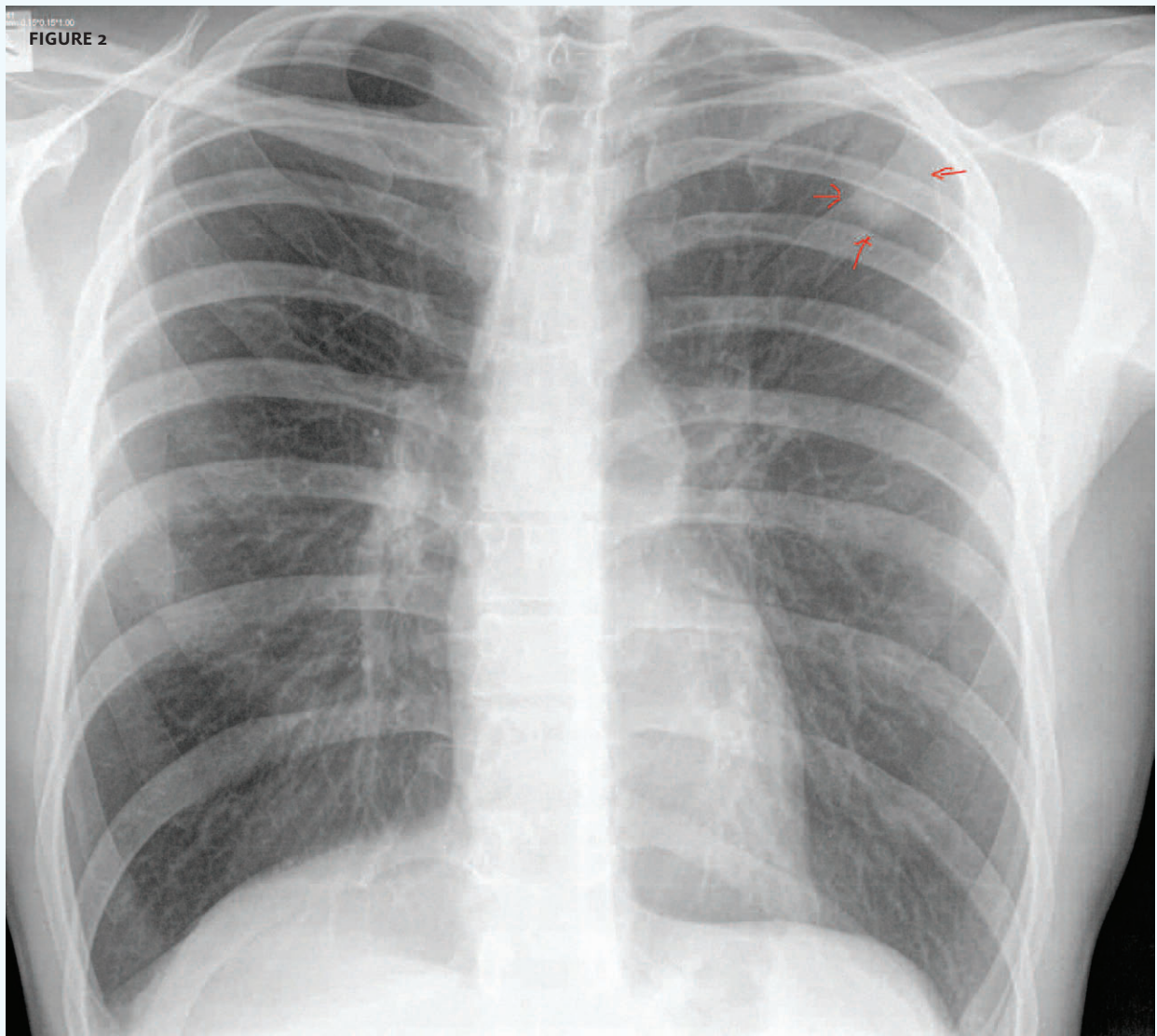


The patient, an otherwise healthy 45-year-old, has had a cough for a month. Location: left side of the chest.

View the image taken (**Figure 1**) and consider what your diagnosis would be.

Resolution of the case is described on the next page.

THE RESOLUTION



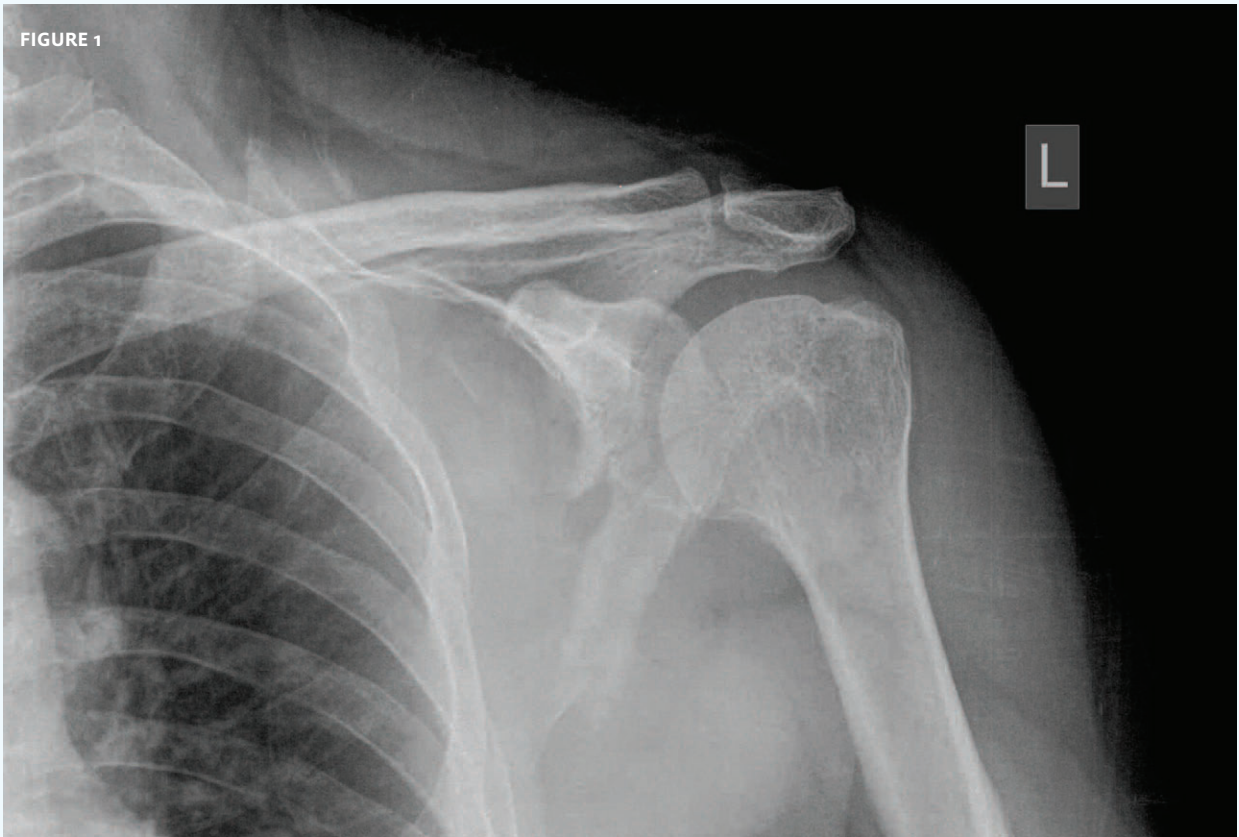
There is a round lesion in the lung that requires follow-up, most likely CT.

Solitary round lesions of less than 3 cm are often benign tumors like granulomas or hamartomas. However, 20% of these are malignant, so additional follow-up and imaging are necessary.

*Acknowledgement: Case presented by Nahum Kovalski, BSc, MDCM, Terem Emergency Medical Centers, Jerusalem, Israel.*



FIGURE 1

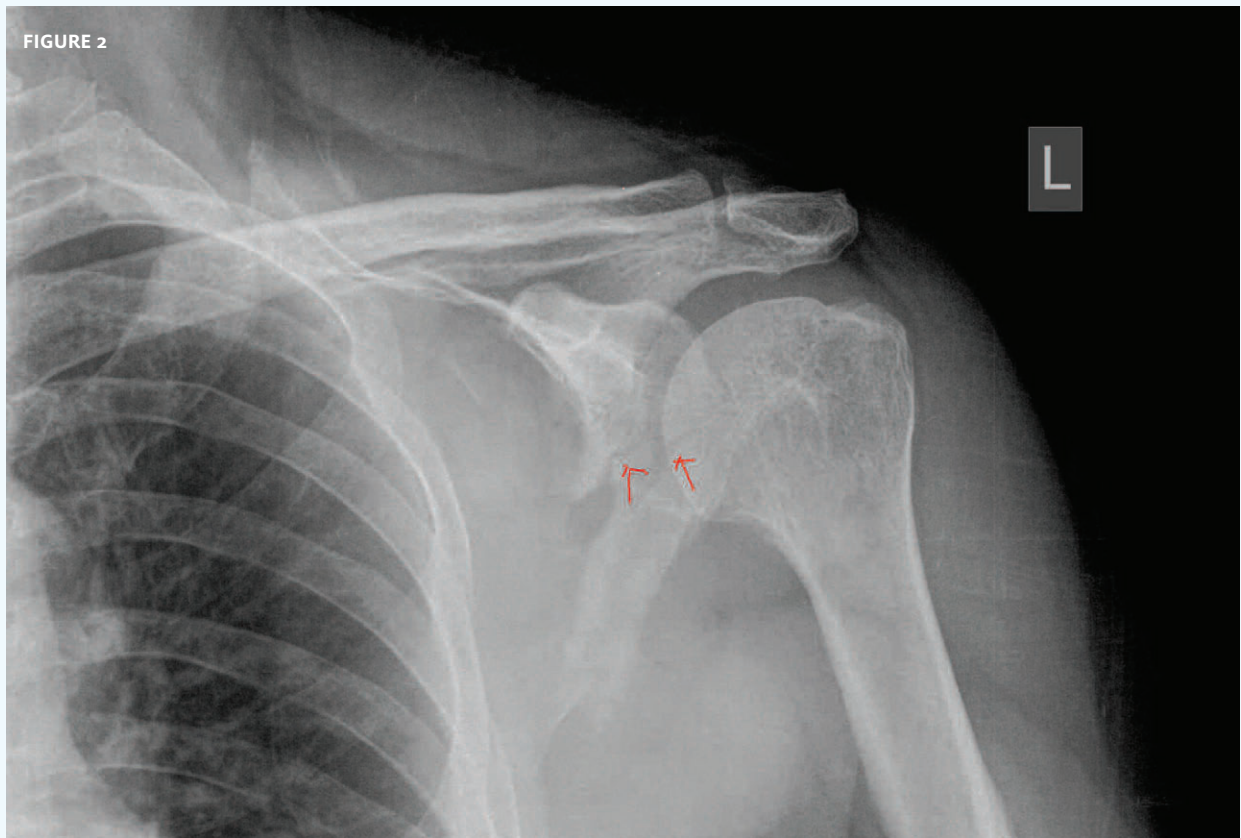


The patient, an otherwise healthy 71-year-old, suffered a blow to the left shoulder.

View the image taken (**Figure 1**) and consider what your diagnosis would be.

Resolution of the case is described on the next page.

THE RESOLUTION



The diagnosis is fracture of the scapula.

Next steps: rest, sling, and follow up with an orthopedist.

Scapular fractures are associated with other severe injuries and the patient must be fully evaluated.

*Acknowledgement: Case presented by Nahum Kovalski, BSc, MDCM, Terem Emergency Medical Centers, Jerusalem, Israel.*