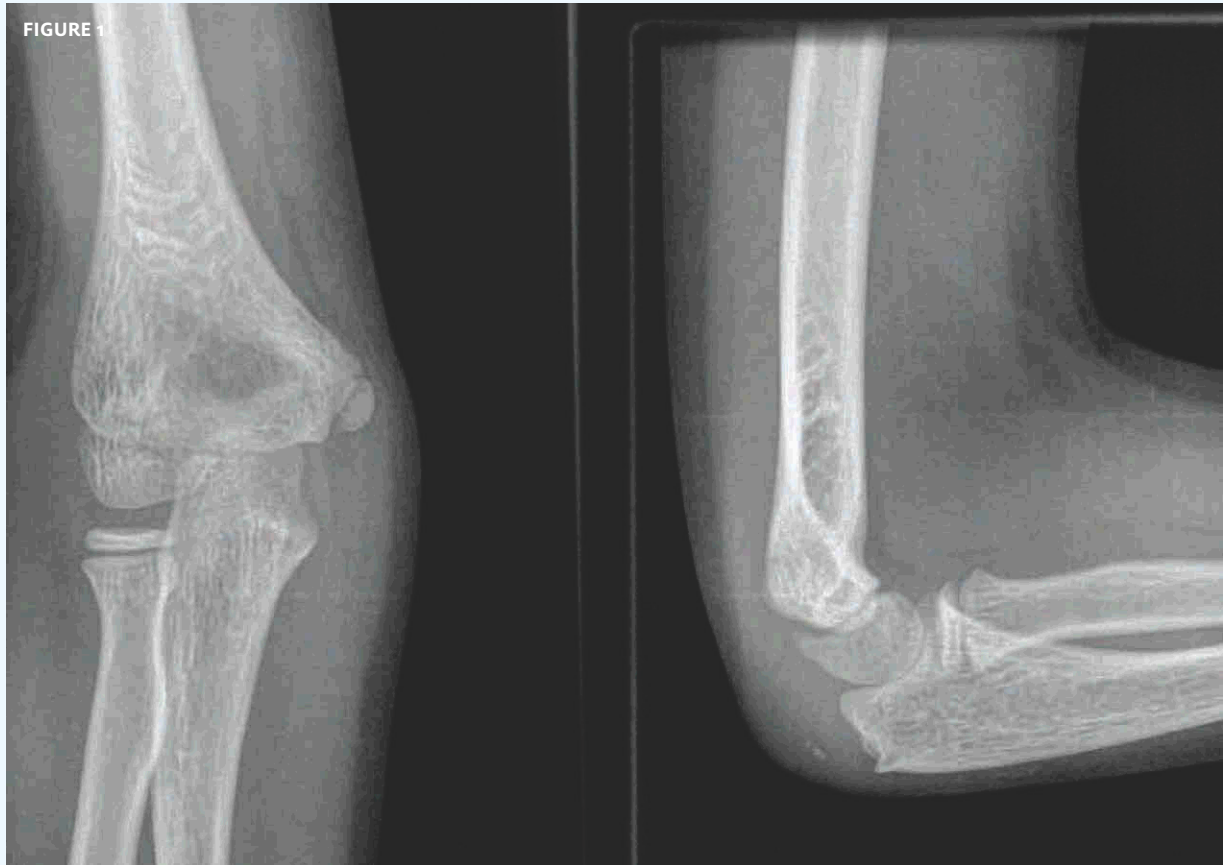




INSIGHTS IN IMAGE CLINICAL CHALLENGE

In each issue, *JUCM* will challenge your diagnostic acumen with a glimpse of x-rays, electrocardiograms, and photographs of dermatologic conditions that real urgent care patients have presented with.

If you would like to submit a case for consideration, please email the relevant materials and presenting information to editor@jucm.com.

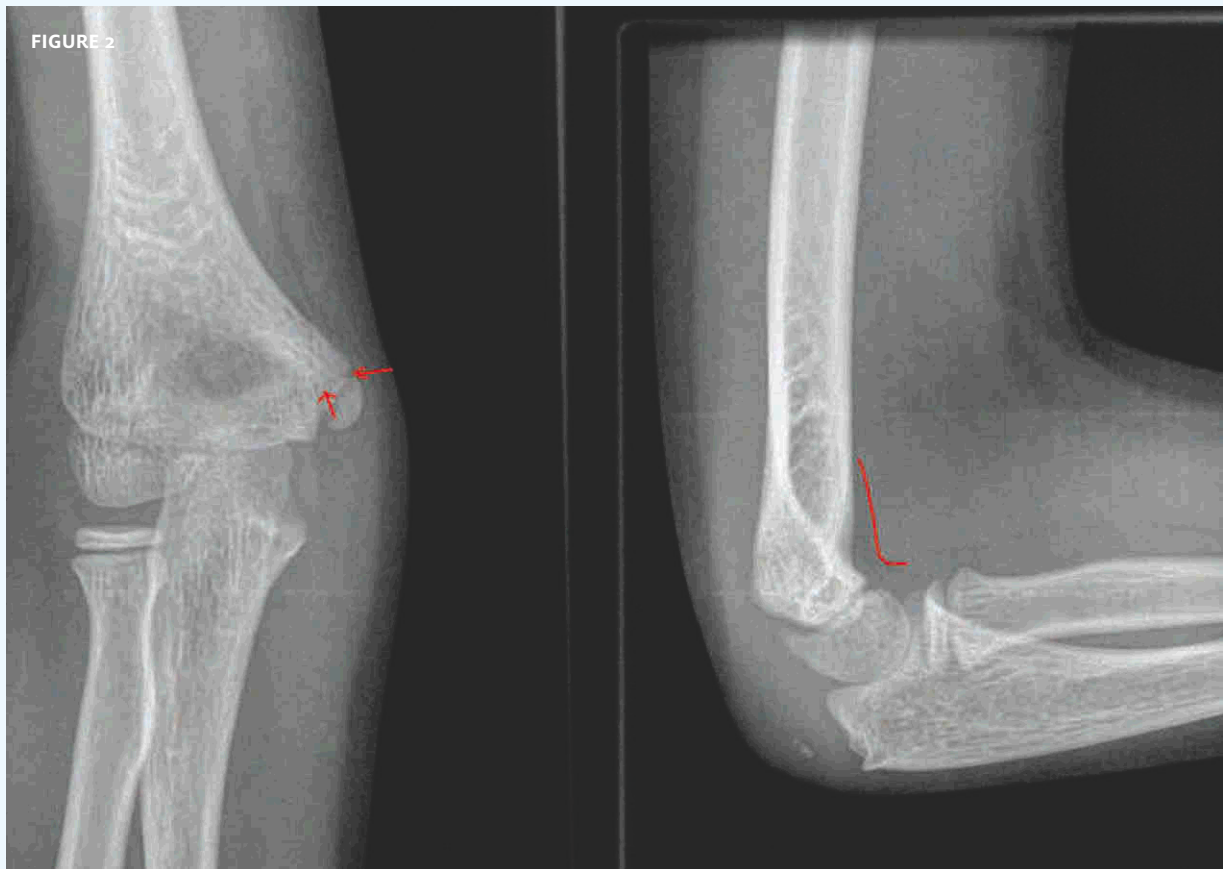


The patient is a 10-year-old who presents after experiencing a blow to the right elbow, with resultant pain on extension of the arm.

View the image taken (**Figure 1**) and consider what your diagnosis and next steps would be.

Resolution of the case is described on the next page.

THE RESOLUTION



There is a suspicious line on the front view; the angle of the distal humerus (on lateral) is also suspicious.

As initially suspected, this child sustained a supracondylar fracture of the distal humerus and was placed in a cast splint at 90° at the elbow.

It should be noted that such fractures are ripe for complication, due in part to the fact that they can be easy to miss. Vigilance based on mechanism of injury is advised.

Acknowledgment: Case presented by Nahum Kovalski, BSc, MDCM, Terem Emergency Medical Centers, Jerusalem, Israel.

These cases are among hundreds that can be found in Terem's online X-ray Teaching File, with more being added daily. Free access to the file is available at <https://www2.teremi.com/xrayteach/>. A no-cost, brief registration is required.