



In each issue, *JUCM* will challenge your diagnostic acumen with a glimpse of x-rays, electrocardiograms, and photographs of dermatologic conditions that real urgent care patients have presented with.

If you would like to submit a case for consideration, please e-mail the relevant materials and presenting information to editor@jucm.com.

FIGURE 1



A 17-year-old patient presents with a “twisted” left knee sustained in a fall, able to bear weight despite obvious pain.

View the image taken (**Figure 1**) and consider what your diagnosis and next steps would be.

Resolution of the case is described on the next page.

THE RESOLUTION

FIGURE 2



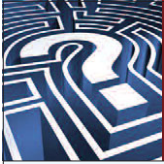
The x-ray shows a fibular head fracture. The patient was placed in a cast splint across the knee and referred for follow-up with an orthopedist.

This is a very good case for our purpose for what it does *not* show.

Fractures of the proximal fibula are infrequently isolated, and more often associated with significant injury to the surrounding ligamentous structures. Care should be taken to examine the ipsilateral ankle for deformity and tenderness.

A Maisonneuve fracture is an unstable fracture of the medial malleolus of the ankle with disruption of the tibiofibular syndesmosis, and is commonly associated with a proximal fibula fracture.

Acknowledgment: Case presented by Nahum Kovalski, BSc, MDCM, Terem Emergency Medical Centers, Jerusalem, Israel.



INSIGHTS IN IMAGES
CLINICAL CHALLENGE CASE 2

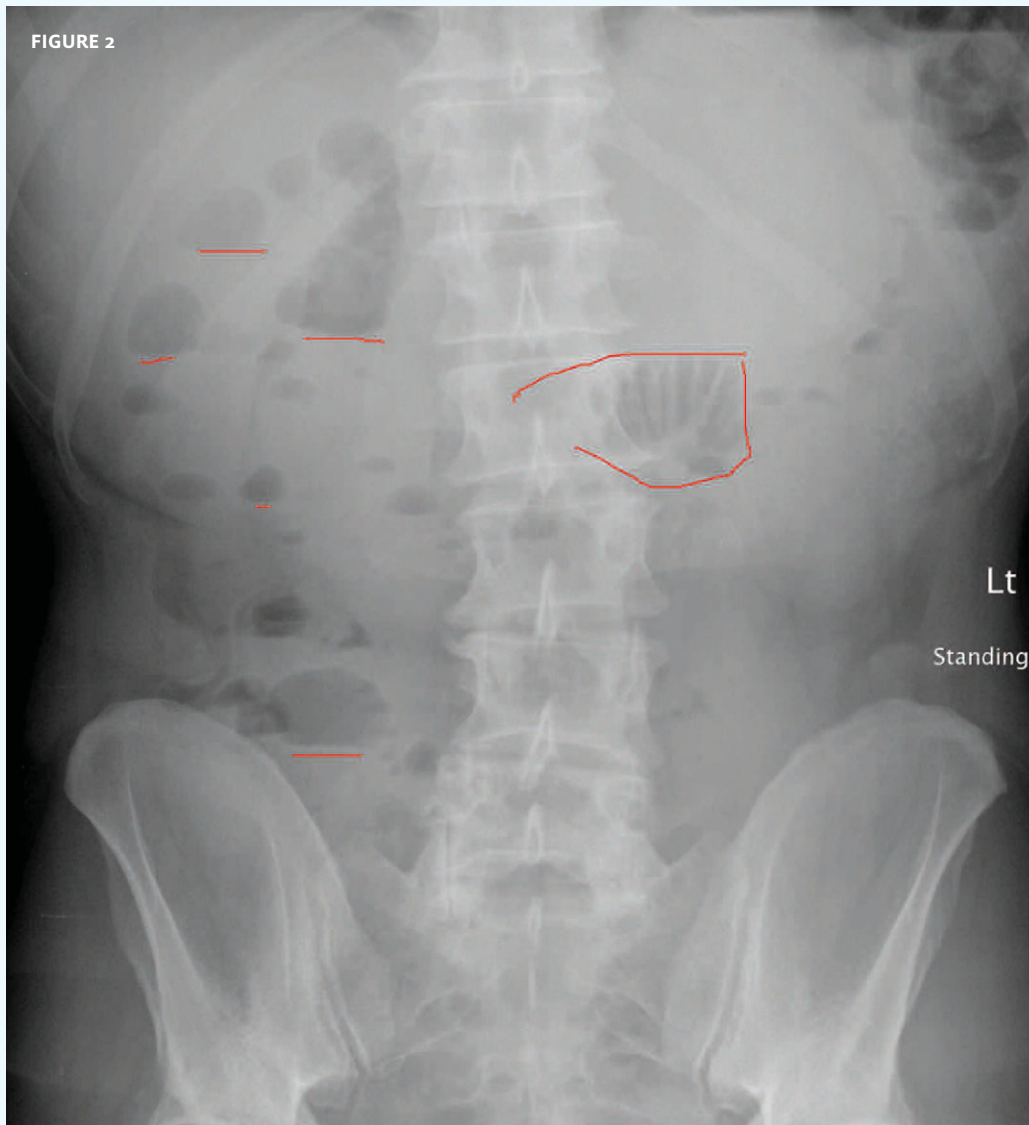


The patient is a 54-year-old woman who presents with a three-day history of constipation. She denies any vomiting, and you note no abdominal distension. She is passing small amounts of gas.

View the image taken (**Figure 1**) and consider what your diagnosis and next steps would be.

Resolution of the case is described on the next page.

THE RESOLUTION



There are multiple small A/F levels and a small loop of distended small bowel. However, there is gas all the way down to the rectum, which was more evident on the second film (not shown).

In this case, one should consider partial bowel obstruction.

While it may be feasible to try to treat the constipation and then repeat the film eight to 12 hours later to see the progression, it would be more prudent to refer for additional evaluation and treatment.

Acknowledgment: Case presented by Nahum Kovalski, BSc, MDCM, Terem Emergency Medical Centers, Jerusalem, Israel.

These cases are among hundreds that can be found in Terem's online X-ray Teaching File, with more being added daily. Free access to the file is available at <https://www2.teremi.com/xrayteach/>. A no-cost, brief registration is required.