

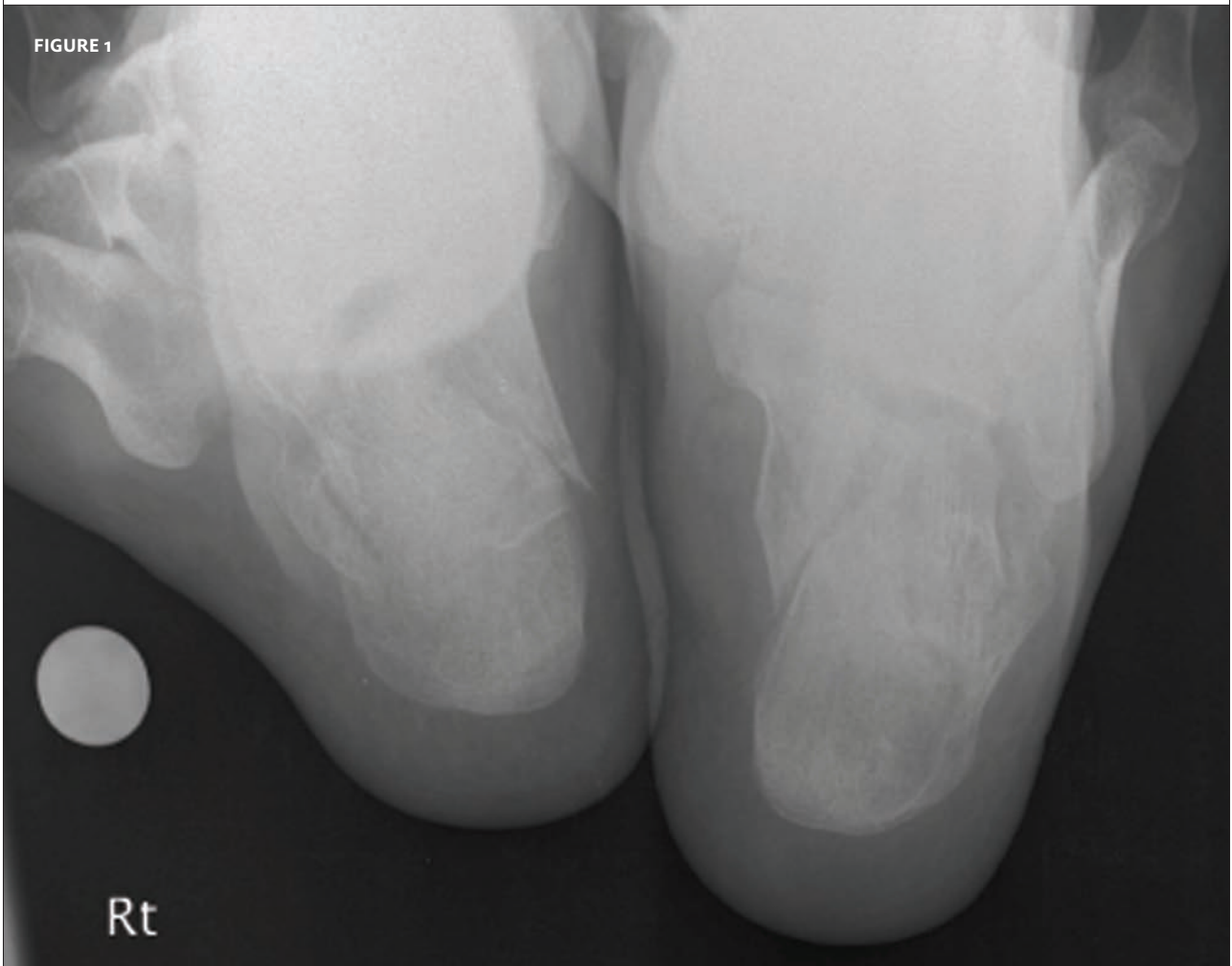


INSIGHTS IN IMAGES CLINICAL CHALLENGE

In each issue, *JUCM* will challenge your diagnostic acumen with a glimpse of x-rays, electrocardiograms, and photographs of dermatologic conditions that real urgent care patients have presented with.

If you would like to submit a case for consideration, please e-mail the relevant materials and presenting information to editor@jucm.com.

FIGURE 1



This male patient presents to urgent care after, he claims, falling from a ladder. He refuses to give further details, except to say that the distance he fell was “not high.”

View the x-ray taken (**Figure 1**) and consider what your diagnosis and next steps would be. Resolution of the case is described on the next page.

THE RESOLUTION

FIGURE 2



The obvious diagnosis is calcaneal fracture. However, it is important to note that as many as 7% of patients with calcaneal fracture may have fracture of the contralateral heel.

Given the appropriate mechanism of injury (i.e., a fall from an adequate height), care must be taken to thoroughly examine both lower extremities to exclude the presence of bilateral injuries.

Acknowledgment: Case presented by Nahum Kovalski, BSc, MDCM.