



INSIGHTS IN IMAGES CLINICAL CHALLENGE

In each issue, *JUCM* will challenge your diagnostic acumen with a glimpse of x-rays, electrocardiograms, and photographs of dermatologic conditions that real urgent care patients have presented with.

If you would like to submit a case for consideration, please e-mail the relevant materials and presenting information to editor@jucm.com.

FIGURE 1

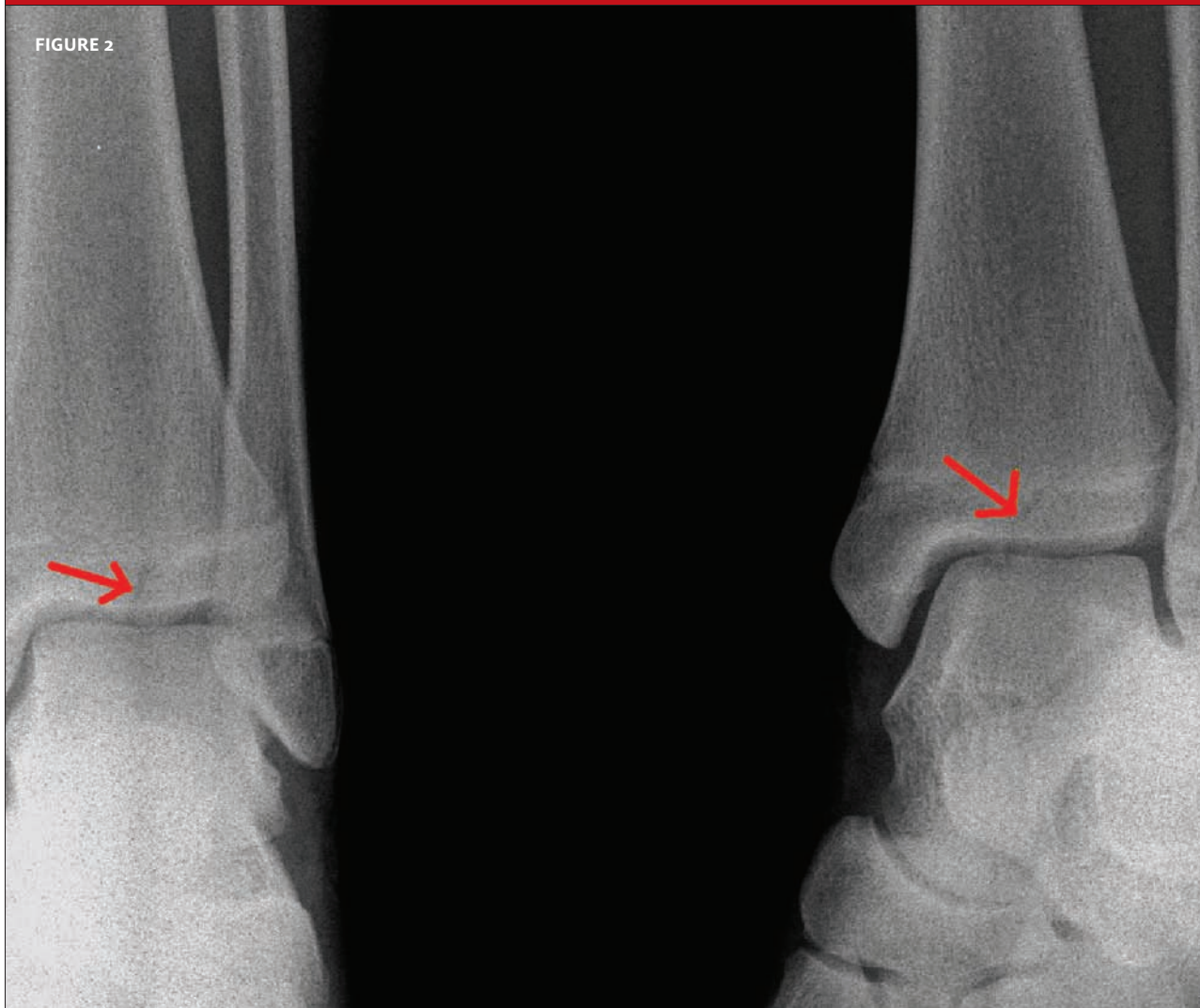


The patient is a 15-year-old boy who presented two days after experiencing a blow to both ankles and the right knee. He could bear weight minimally, with tenderness over the lateral and medial malleolus, as well as over the knee. There was marked swelling

View the x-rays taken (**Figure 1**) and consider what your diagnosis and next steps would be. Resolution of the case is described on the next page.

THE RESOLUTION

FIGURE 2



The x-rays reveal an intra-articular fracture of the distal tibia.

A cast splint was applied and the patient referred for urgent orthopedic consultation.

Acknowledgment: Case presented by Nahum Kovalski, BSc, MDCM.