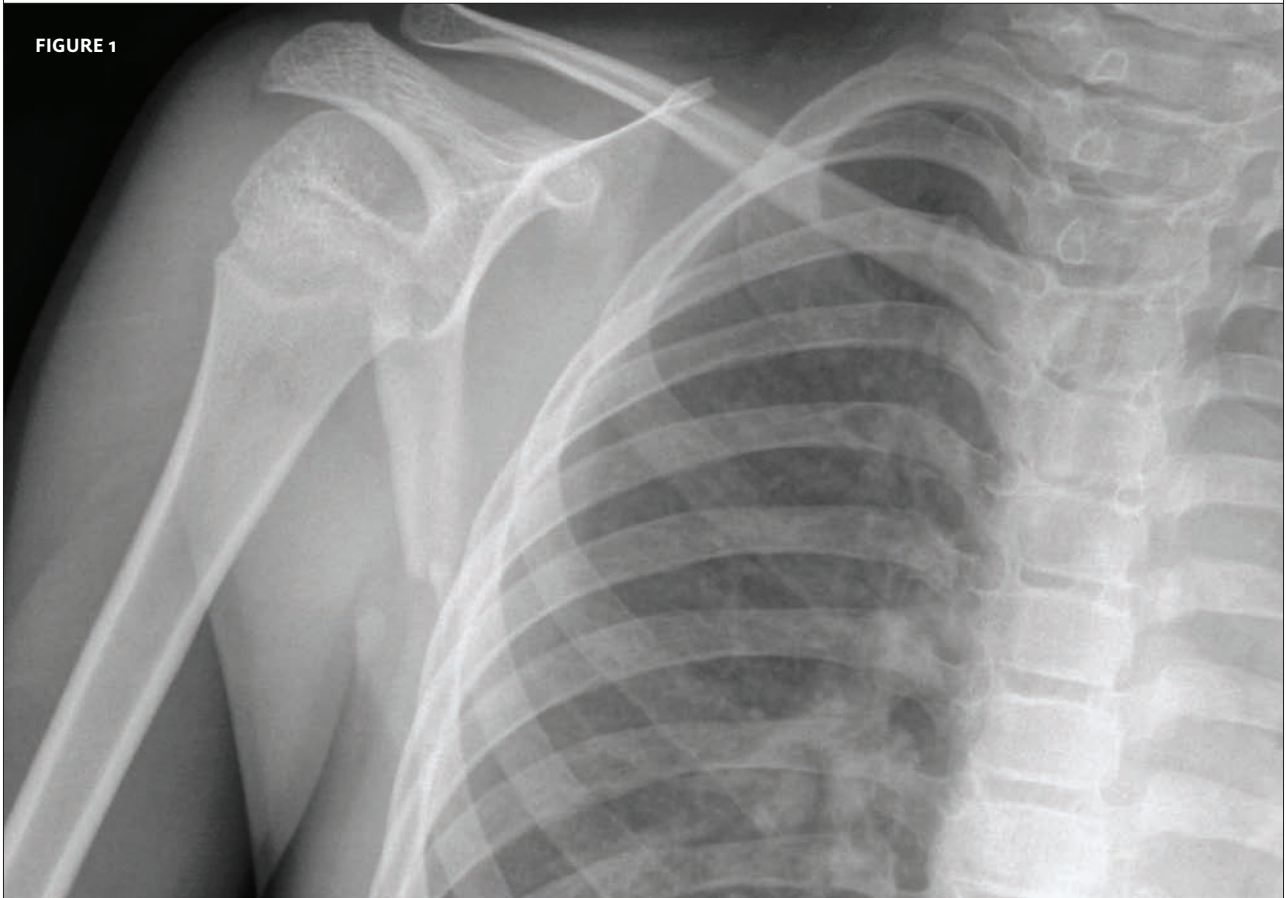




In each issue, *JUCM* will challenge your diagnostic acumen with a glimpse of x-rays, electrocardiograms, and photographs of dermatologic conditions that real urgent care patients have presented with.

If you would like to submit a case for consideration, please e-mail the relevant materials and presenting information to [editor@jucm.com](mailto:editor@jucm.com).

FIGURE 1

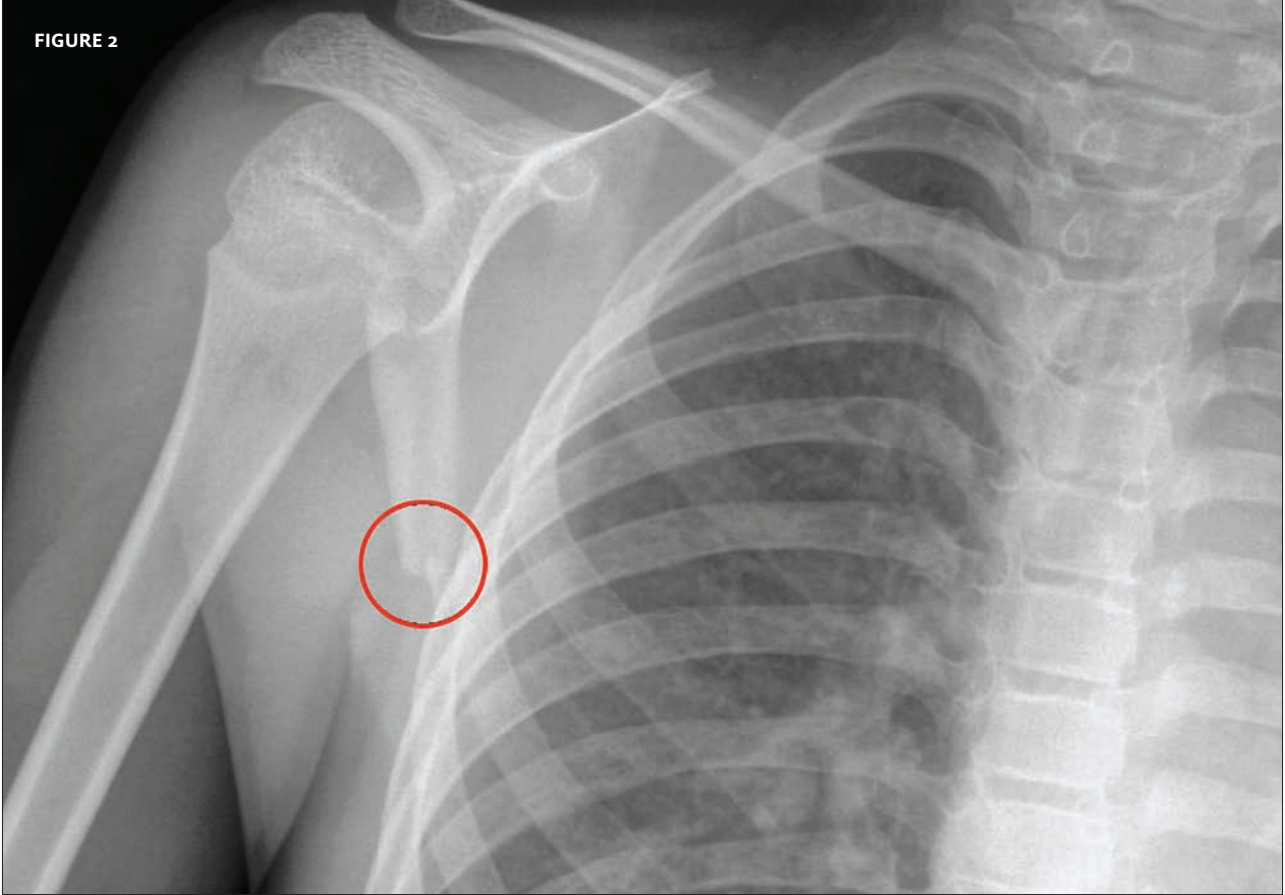


The patient is a 9-year-old boy who received a blow to the shoulder from a height of approximately 6 ½ feet. He has limited elevation of the arm due to pain.

View the x-ray taken (**Figure 1**) and consider what your diagnosis and next steps would be. Resolution of the case is described on the next page.

THE RESOLUTION

FIGURE 2



The correct reading of the x-ray is: scapular fracture. The boy was placed in a sling and advised to follow up with an orthopedist the next day.

Due to the nature and location of the injury and the pain the patient was experiencing, a chest x-ray was also taken, but no other injuries were noted.

*Acknowledgment: Case presented by Nahum Kovalski, BSc, MDCM.*



FIGURE 1



The patient is an 18-year-old male who jumped or fell from a “short height” but landed hard on his heel. He is able to ambulate, but cannot put any pressure on his heel.

View the x-ray taken (**Figure 1**) and consider what your diagnosis and next steps would be. Resolution of the case is described on the next page.

THE RESOLUTION

FIGURE 2



The image reveals a fracture of the anterior calcaneus.

The patient was placed in a posterior cast splint and advised to follow up with an orthopedist the following day.

*Acknowledgment: Case presented by Nahum Kovalski, BSc, MDCM.*